

Relationship of HbA1c Values to Retinopathy, Nephropathy, and Cardiovascular

Aaya Hamid Al-Hakeem*, Hadeel Haider Saleh

¹College of Pharmacy, Al-Bayan University, Baghdad, Iraq.

²College of Dentistry, University of Baghdad, Baghdad, Iraq.

Received: 22th Dec, 19; Revised: 28th Jan, 20, Accepted: 15th Feb, 20; Available Online: 25th March, 2020

ABSTRACT

A total of 50 patients aged 35-75 years From Al-Sader educational Hospital in Al-Najaf city was studied to determine the glycated hemoglobin risk factors with value creatinine and urea in serum and diabetic nephropathy. Diabetic patient were (35-45 years old) with HbA1c 7.9 % (60mmol/mol). Patient were (45-55 years old), glycated hemoglobin (HbA1c) > 8.5 %. Patients between (55-65 years were glycated hemoglobin (HbA1c) >10.5 %. HbA1c levels, lipid profile, level of Creatinine and urea in serum, family history, BMI, blood pressure, disease severity, and complications were determined. Most patients developed some grade of retinopathy (examined by an ophthalmologist) except those with HbA1c 6.7% (50mmol/mol). Diabetic patients aged (55-65 years old) with HbA1c 7.6% (60mmol/mol). Patients aged 56-75 years old of glycated hemoglobin (HbA1c) >7% with poor glycaemia control $\geq 126\text{mg/dL}$ were assessed to classify diabetic retinopathy.

HbA1c and GA are associated with nephropathy separately. Retinopathy and nephropathy may respond to different aspects of hyperglycemia. The GA found as a powerful indicator of microvascular complications same as HbA1c where long-term glycaemia is the risk factor.

Keywords: Diabetic nephropathy, Diabetic retinopathy, Glycated hemoglobin.

International Journal of Drug Delivery Technology (2020); DOI: 10.25258/ijddt.10.1.17

How to cite this article: Al-Hakeem, A.H. and Saleh, H.H. (2020). Relationship of HbA1c Values to Retinopathy, Nephropathy, and Cardiovascular. International Journal of Drug Delivery Technology, 10(1):127-130.

Source of support: Nil

Conflict of interest: None

INTRODUCTION

More than 300 million individuals are affected by diabetes worldwide.¹ One million new cases yearly in the USA only.² Diabetic people are at high risk of developing diabetic retinopathy, nephropathy, and neuropathy that affect their life.^{3,4} Glycaemic control, age, disease duration, genetic factors, and smoking are the main risk factors.^{5,6} End-stage renal disease (ESRD) is due to diabetic nephropathy, which is common in western countries.^{7,8} Visual disability due to diabetic retinal disease is common among those of working age. Visual impairment can be treated through photocoagulation treatment. Glycated hemoglobin (hemoglobin A1c or HbA1c) level is used for long-term glycaemic control.⁹ Genetic and medical conditions factors influence HbA1c and its measurement, even with constant glucose levels.¹⁰ Adipose tissue is important in 2DM patients as the secretion of adipocytokines like leptin, TNF α , resistin, and adiponectin are implicated in insulin resistance and beta-cell dysfunction. Type 2 diabetes mellitus (DM) is primarily due to lifestyle factors (physical inactivity, smoking, alcohols, and pollutants) and genetics (especially first degree relatives). About 55% of T2DM patients are obese and

increasing in children and adolescents.¹¹⁻¹⁶ Recently, several genes were implicated with developing T2DM, including obesity genes.¹⁷⁻¹⁹ Long-lasting effects of diabetes mellitus cause many complications like diabetic nephropathy and high mortality.²⁰

Diabetic retinopathy (DR) might cause blindness as a microvascular disorder with neuroretinal degeneration. Hemoglobin A1c is represented as a good marker for microvascular complications which is correlated with fasting plasma glucose.

Recently, rapid, non-invasive and simple test (fundus-driven microperimetry) is used to measure retinal sensitivity in retina early functional changes detection.²¹

MATERIAL AND METHODS

Patients who smoking, took anti-inflammatory agents, receiving hormone replacement therapy and with a history of macrovascular disease, were excluded.

Glycosylated Hemoglobin (HbA1c)

Glycosylated hemoglobin kit (Stanbio laboratory, USA) is used for quantitative colorimetric determination of glycohemoglobin in whole blood following the manufacturer's recommended

procedure. HbA1 percentage was determined by measuring the absorbance at 415nm and calculating the ratio of absorbances (R) then compared with that of a glycohemoglobin standard.

Results were converted for HbA1c using a conversion factor (7.6) or when using a standard HbA1c value.

Calculations

For each standard and unknown, the ratio (R) of the Glycohemoglobin absorbance to the hemoglobin absorbance calculated as follows:

$$R = \frac{\text{A-glycosylated}}{\text{A-to total}}$$

$$\text{X 7.6 Glycohemoglobin (\%)} = \frac{R (\text{unknown})}{R (\text{standard})}$$

Measurement of Fasting Blood Glucose

Serum glucose level was measured by glucose (Glucose-PAP) kit (Audit Diagnostics, Ireland) which was based on the following principle:

Glucose was oxidized (in the presence of glucose oxidase) to gluconic acid and hydrogen peroxide which converts phenol and 4-aminoantipyrine into a red quinone which is measured at 500nm. The intensity of the color of the red quinone produced is directly proportional to the quantity of glucose in the sample (Table 1).

Procedure

Reagent and specimens were put stand at room temperature.

	Blank	Standard	Sample
Reagent 1	1 mL	1 mL	1 mL
Sample			10 ul
Standard		10 ul	

mix. let stand for 5 minutes at 37°C, the optical density (OD) and specify against reagent blank, measured at 500 nm

Calculation

Results calculated as the following:

$$\text{X standard concentration}$$

$$\text{Concentration of glucose} = \frac{\text{OD sample}}{\text{OD (standard)}}$$

$$\text{Standard concentration} = 100 \text{ mg /dl}$$

RESULTS

Diabetes Mellitus Duration

Figure 1 shows Diabetes mellitus duration divided into four categories, 35-45 years, 45-55 years, 55-65 years, 65-75years. Found high diabetes retinopathy in 65-75 years old.

Types of Retinopathy

The patients were classified in to four classes according to the worst eye²⁰ (Figure 2).

Parameters Associated with Higher Levels of HbA1c

High level of HbA1c is significantly associated with the glycemic levels. A lower level of HbA1c is significantly associated with low HDL-C and total obesity. However, age, stroke, elevated TG, DM types, and hypertension have no influence on HbA1c level. HbA1c level and DM duration found significantly and negatively related with BMI (Table 2).

Level of Urea with HbA1c

Both HbA1c and Urea are affected significantly by the postprandial values, the pre-prandial values of urea, and the value at bedtime¹⁸ (Figure 3).

Level Creatinine with HbA1c

Serum Creatinine levels found higher than the normal range in patients. The mean of Creatinine level in serum blood (1.6mg/dL) is affected by many factors like age, sex, and

Table 1: Reagents composition

Component	Ingredients	Concentration in tests
Reagent 1	Phosphate buffer ph 7.5	100 mmo1/1
	4-Aminophenazone	0.3 mmo1/ 1
	Phenol	1 mmo1/1
	Peroxidase	2000 U/1
	Glucose oxidase	200000 U/1
	Preservatives	
standard	Glucose	5.56 mmo 1/1

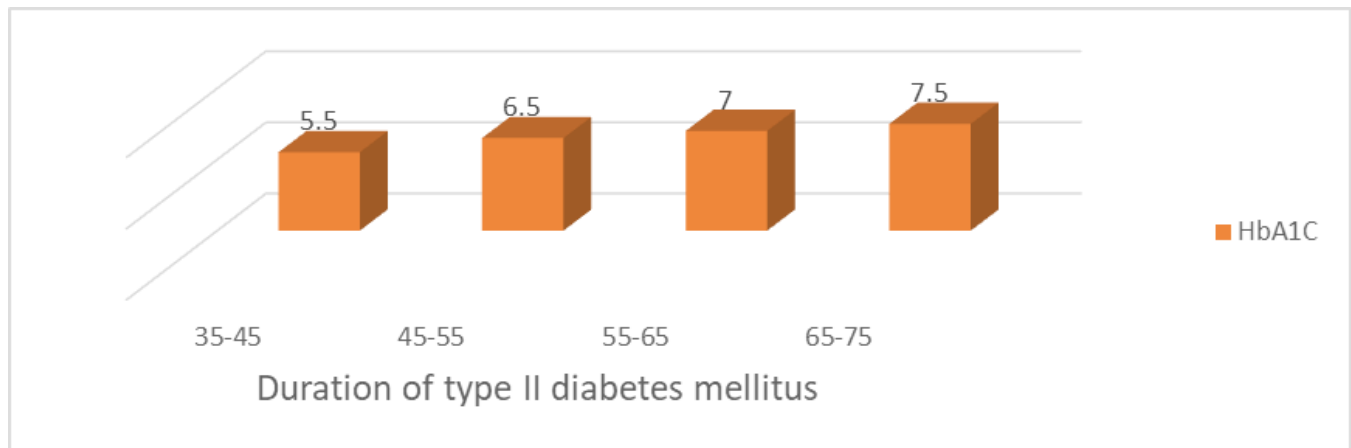


Figure 1: Distribution of diabetic patients in the study according to the duration of disease

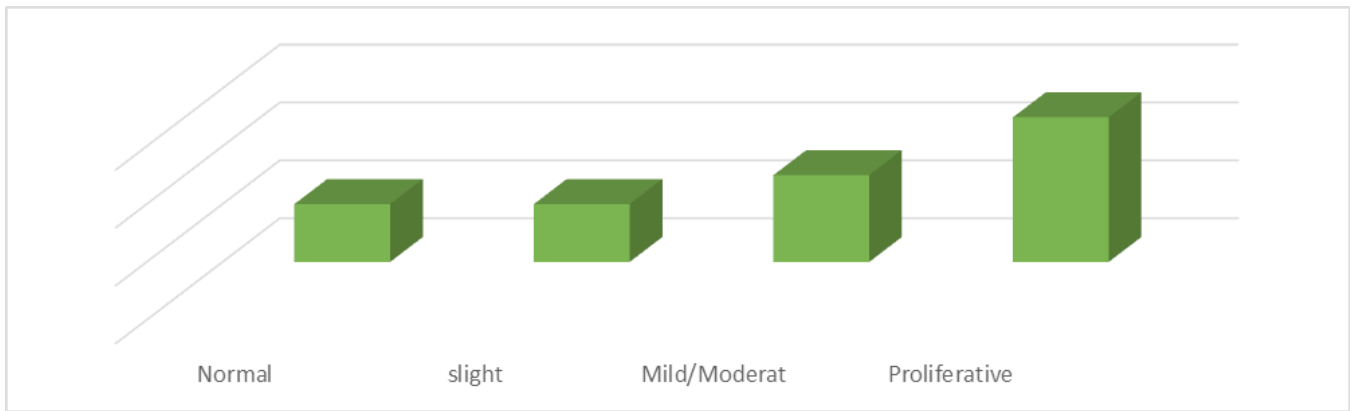


Figure 2: Patients classified in each retinopathy groups (four groups)

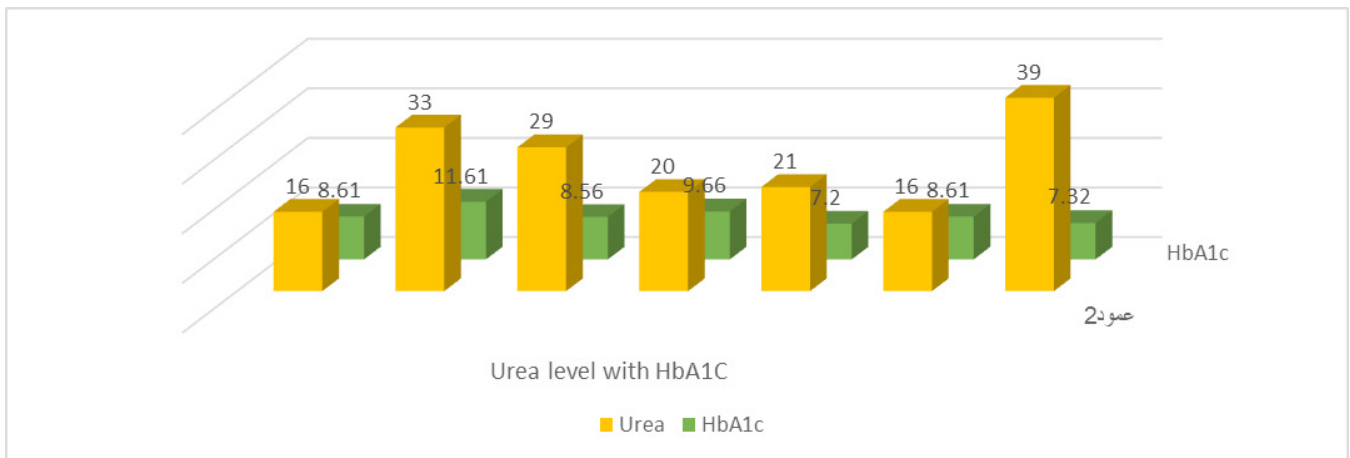


Figure 3: Relationship between Urea and HbA1c

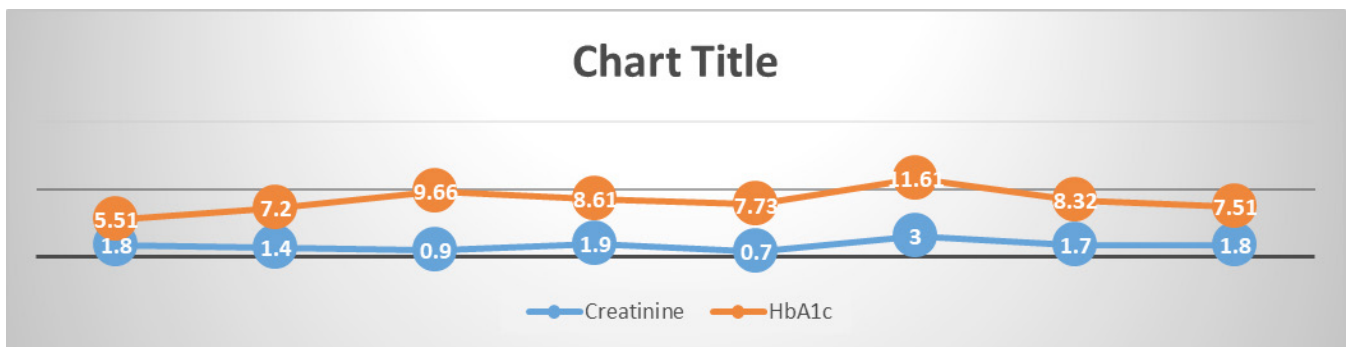


Figure 4: Relationship Creatinine level with HbA1c

physical status.²² In Figure 4 showing the relationship between Creatinine and HbA1c that is found significant.

Table 2: Study population general characteristics (n=50)

Variable	Mean ± SD
Age (years)	56 ± 16
BMI (kg/m ²)	28.2 ± 6.2
SBP (mmHg)	137.7 ± 19.6
Pulse pressure (mmHg)	57 ± 18.3
Blood glucose (mg/dL)	199.3 ± 36.4
Total cholesterol (mg/dL)	197.3 ± 35.4
HDL-cholesterol (mg/dL)	101.1 ± 86.4
Triglycerides (mg/dL)	158.3 ± 100.3
HbA1c (%)	7.4 ± 1.4

DISCUSSION

HbA1c and GA are associated with nephropathy separately. Retinopathy and nephropathy may respond to different hyperglycemia aspects as differential effects of HbA1c and GA.²² HbA1c and GA showed similar correlations with retinopathy and nephropathy, which support the study of Atherosclerosis Risk in Communities (ARIC) population, where GA found as a powerful indicator of these complications the same as HbA1c.²³ Weak relation of both retinopathy and nephropathy with MBG and when GA or HbA1c levels are considered; indicating that the long-term glycaemia measurements is the risk factor for microvascular complications where HbA1c or GA levels showed strong association.²⁴

CONCLUSION

HbA1c and GA are associated with nephropathy separately. Retinopathy and nephropathy may respond to different aspects of hyperglycemia. GA found as a powerful indicator of microvascular complications same as HbA1c where long-term glycaemia is the risk factor.

ETHICAL CLEARANCE

The Research Ethical Committee at scientific research by ethical approval of both environmental and health and higher education and scientific research ministries in Iraq

REFERENCES

1. Sherwin R, Jastreboff AM. Year in diabetes 2012: the diabetes tsunami. *The Journal of Clinical Endocrinology & Metabolism*. 2012 Dec 1;97(12):4293-4301.
2. Pittas AG, Lau J, Hu FB, Dawson-Hughes B. The role of vitamin D and calcium in type 2 diabetes. A systematic review and meta-analysis. *The Journal of Clinical Endocrinology & Metabolism*. 2007 Jun 1;92(6):2017-2029.
3. Raman R, Gupta A, Krishna S, Kulothungan V, Sharma T. Prevalence and risk factors for diabetic microvascular complications in newly diagnosed type II diabetes mellitus. Sankara Nethralaya Diabetic Retinopathy Epidemiology and Molecular Genetic Study (SN-DREAMS, report 27). *Journal of Diabetes and its Complications*. 2012 Mar 1;26(2):123-128.
4. Mata-Cases M, De Prado-Lacueva C, Salido-Valencia V, Fernández-Bertolín E, Casermeiro-Cortés J, García-Durán M, Jabalera-López S, Fernández-Sanmartín MI. Incidence of complications and mortality in a type 2 diabetes patient cohort study followed up from diagnosis in a primary healthcare centre. *International journal of clinical practice*. 2011 Mar;65(3):299-307.
5. Girach A, Manner D, Porta M. Diabetic microvascular complications: can patients at risk be identified? A review. *International journal of clinical practice*. 2006 Nov;60(11):1471-1483.
6. Cardoso CR, Salles GF. Predictors of development and progression of microvascular complications in a cohort of Brazilian type 2 diabetic patients. *Journal of Diabetes and its Complications*. 2008 May 1;22(3):164-170.
7. Tervaert TW, Mooyaart AL, Amann K, Cohen AH, Cook HT, Drachenberg CB, Ferrario F, Fogo AB, Haas M, de Heer E, Joh K. Pathologic classification of diabetic nephropathy. *Journal of the American Society of Nephrology*. 2010 Apr 1;21(4):556-563.
8. Centers for Disease Control and Prevention. National diabetes statistics report, 2017. Atlanta, GA: Centers for Disease Control and Prevention, US Department of Health and Human Services. 2017 Jul 17;20.
9. Osei K, Rhinesmith S, Gaillard T, Schuster D. Is glycosylated hemoglobin A1c a surrogate for metabolic syndrome in nondiabetic, first-degree relatives of African-American patients with type 2 diabetes?. *The Journal of Clinical Endocrinology & Metabolism*. 2003 Oct 1;88(10):4596-4601.
10. Ekpebeigh CO, Longo-Mbenza B, Blanco-Blanco E. Glycosylated haemoglobin is markedly elevated in new and known diabetes patients with hyperglycaemic ketoacidosis. *African health sciences*. 2014;14(3):526-532.
11. Garcia-Roves. Evaluation of the enzymatic method for glycosylated albumin with liquid type reagent (Lucia GA-L). *Jpn J Med Pharm Sci.*, 2011;51:737-745
12. Hu Raghunathan TE, Lepkowski JM, Hoewyk JV, Solenberger P. A multivariate technique for multiply imputing missing values using a sequence of regression models. *Surv Methodol.*, 2001;27:85-95
13. Ripsin, Lachin JM. Sample size evaluation for a multiply matched case-control study using the score test from a conditional logistic (discrete Cox PH) regression model. *Stat Med.*, 2009;27:2509-2523
14. Barlow and the Expert committee. Multiple imputation for interval estimation from simple random samples with ignorable nonresponse. *J Am Stat Assoc.*, 2007;81:366-374
15. Lang, Molnar GD, Gastineau CF, Rosevear JW, Moxness KE. Quantitative aspects of labile diabetes. *Diabetes*, 2008;14:279-288
16. Rother. Computing the Cox model for case cohort designs. *Lifetime Data Anal.*, 2007;5:99-112
17. McCallthy, Robust variance estimation for the case-cohort design. *Biometrics*, 2010;50:1064-1072
18. Wallycy, McCarter RJ Jr, Hempe JM, Chalew SA. Mean blood glucose and biological variation have greater influence on HbA1c levels than glucose instability: an analysis of data from the Diabetes Control and Complications Trial. *Diabetes Care*, 2006;29:352-355.
19. Alberti, Peacock TP, Shihabi ZK, Bleyer AJ, et al. Comparison of glycosylated albumin and hemoglobin A(1c) levels in diabetic subjects on hemodialysis. *Kidney Int.*, 2005;73:1062-1068
20. Adler AI, Stratton IM, Neil HA, et al. Association of glycaemia with macrovascula and microvascular implications of type 2 diabetes (UKPDS 35): prospective observational study. *BMJ*, 2000;321:405-412.
21. T.A. Ciulla, A.G. Amador, B. Diabetic retinopathy and diabetic macular edema: pathophysiology, screening, and novel therapies, 2003.
22. Peacock TP, Shihabi ZK, Bleyer AJ, et al. Comparison of glycosylated albumin and hemoglobin A(1c) levels in diabetic subjects on hemodialysis. *Kidney In.*, 2008;73:1062-1068.
23. Selvin E, Francis LMA, Ballantyne CM, et al. Nontraditional markers of glycemia: associations with microvascular conditions. *Diabetes Care*, 2011; 34:960-967.
24. Wadén J, Forsblom C, Thorn LM, Gordin D, Saraheimo M, Groop PH; Finnish Diabetic Nephropathy Study Group. A1C variability predicts incident cardiovascular events, microalbuminuria, and overt diabetic nephropathy in patients with type 1 diabetes. *Diabetes*, 2009;58:2649-2655.