

Advanced Drug Delivery Approaches for Neuro-Cardiac Disorders: Implications for Rehabilitation and Physiotherapy Outcomes

Kiran Velukuri^{*1}, Nusarath Jaha Gurram Konda², Azariah Temotheous Chullai³, Begum Affrin Zaman⁴,
Ms. Sampada Gaikwad⁵, Dr. Prakram Singh Chauhan⁶

^{1*}Professor in Physiotherapy, Apollo College of Physiotherapy, Chittoor, MPT in Cardio-Respiratory,
Email ID: kynave@gmail.com, Orcid ID:0009-0003-6371-4895 Scopus ID: 59761084500

²Assistant Professor, The Apollo University, Chittoor, Physiotherapy MPT in Neurology,
Email ID: nusarathjaha_g@apollouniversity.edu.in, Orcid ID:0009-0004-1423-8615, Scopus ID -59761951700

³Assistant Professor, Faculty of Physiotherapy and Rehabilitation, Assam Down Town University, Guwahati,
Email ID: azariah.chullai@adtu.in Orcid ID : 0009-0000-0822-5325

⁴Assistant Professor in Physiotherapy, Department of Physiotherapy, Assam Women's University, MPT in Cardio
Respiratory Disorders, Assam Women's University, Jorhat, Assam,
Email ID: affrin.zaman123@gmail.com
Orcid ID:0000-0002-3509-7872

⁵ Assistant Professor, Department of Medical Technology and Health Sciences - Cardiac Care Technology, Parul Institute
Of Allied and Healthcare Sciences, Parul University, Vadodara, Gujarat.
Email ID - gaikwadsampadasunil@gmail.com, ORCID ID - 0009-0006-1388-0897

⁶Chitkara College of Pharmacy, Pharmaceutical Biotechnology, Chitkara University, Chandigarh-Punjab National
Highway (NH-64), Rajpura, Punjab,
Email: prakram.chauhan@chitkara.edu.in, ORCID: 0000-0002-9464-5402

ABSTRACT

Neuro-cardiac disorders arise from complex bidirectional interactions between the central nervous system and the cardiovascular system, resulting in combined neurological and cardiac impairments that significantly affect functional recovery and quality of life. Pharmacological management remains central to treatment; however, conventional drug delivery approaches are often limited by poor tissue specificity, restricted blood–brain barrier penetration, systemic adverse effects, and challenges with long-term adherence. These limitations not only compromise therapeutic efficacy but also hinder active participation in rehabilitation and physiotherapy, which are essential for functional restoration in neuro-cardiac patients. Recent advances in drug delivery technologies, particularly nanotechnology-based and targeted delivery systems, offer promising strategies to overcome these barriers. By enabling controlled, sustained, and site-specific drug release, advanced delivery platforms can modulate key biological mechanisms underlying recovery, including neuroplasticity, cardiovascular adaptability, pain regulation, and neuromuscular control. Such optimization of pharmacological support creates a more stable physiological environment, enhancing tolerance to exercise, reducing symptom burden, and facilitating greater engagement in structured rehabilitation programs. This review explores the pathophysiological basis of neuro-cardiac disorders, examines the limitations of conventional pharmacotherapy, and highlights emerging advanced drug delivery approaches with relevance to rehabilitation outcomes. Particular emphasis is placed on how optimized drug delivery can synergize with physiotherapy to improve motor recovery, cardiovascular conditioning, and functional independence. By integrating pharmacological innovation with rehabilitation science, advanced drug delivery systems have the potential to transform neuro-cardiac care from symptom management toward function-centered recovery. Addressing translational, regulatory, and accessibility challenges will be critical to realizing their full clinical impact.

Keywords: Neuro-cardiac disorders; Advanced drug delivery; Rehabilitation; Physiotherapy outcomes; Neuroplasticity

How to cite this article: Velukuri K, Gurram Konda NJ, Chullai AT, Zaman BA, Gaikwad S, Chauhan PS., Advanced Drug Delivery Approaches for Neuro-Cardiac Disorders: Implications for Rehabilitation and Physiotherapy Outcomes.. Int J Drug Deliv Technol. 2026;16(2s): 923-934; DOI: 10.25258/ijddt.16. 923-934

Source of support: Nil.

Conflict of interest: None

INTRODUCTION

Neuro-cardiac disorders are a multi-faceted continuum of complexities, which come about due to the intimate and reciprocal association of the central nervous system and the cardiovascular system. This communication, also known as the neuro-cardiac axis is very important in the process of physiological homeostasis. This axis is disrupted, causing morbidity and impairment of long-

term functions in patients with stroke-associated cardiac dysfunction, heart failure with neurological involvement, neurodegenerative disorders with cardiovascular outcomes, etc. These conditions present significant challenges in clinical treatment as well as in rehabilitation in which the combined effect of neurological impairment, coupled with cardiovascular unsteadiness, contributes to recovery outcomes¹.

*Author for Correspondence: Kiran Velukuri

Advanced Drug Delivery Approaches for Neuro-Cardiac Disorders: Implications for Rehabilitation and Physiotherapy Outcomes.

Pharmacological treatment is one of the pillars, both in the treatment of neurological and cardiovascular components of neuro-cardiac disorders. But the standard method of drug delivery is often not able to reach optimal therapeutic efficacy because of low bioavailability, no tissue specificity and side effects of the drugs on the human body. In cardiovascular medicine, classical drug formulations tend to lead to off-target distribution and dose limiting toxicity undermining long-term treatment compliance and functional recovery². Likewise, in central nervous system diseases therapeutic efficacy is severely limited by the physiological barriers, especially blood-brain barrier that limits the penetration of most medicines into the brain parenchyma³.

Blood-brain barrier is one of the most prominent barriers to the treatment of the neurological conditions. Its extreme selectivity in permeability restricts the delivery of neuroprotective and neuromodulatory agents, and lowers their clinical performance. Consequently, patients still tend to have persistent neurological impairments that adversely affect their inclusion and initiation in rehabilitation and physiotherapy programs. Based on the theory, neuro-cardiac disorders are powered by interacting processes that entail autonomic dysregulation, neuroinflammation, oxidative stress, and vascular dysfunction. The mechanisms affect cerebral perfusion, cardiac rhythm and function and impair neuromuscular coordination, which are paramount determinants of functional recovery. Treatment of these intertwining pathways needs therapeutic measures that are able to focus on the affected tissues with a high degree of precision and also are systemic safe. Controlled, targeted and sustained delivery of therapeutic agents has been identified as one of the solutions to these problems and advanced drug delivery systems have been developed⁴.

Drug delivery based on nanotechnology has acquired significant interest in terms of its capability to surmount the shortcomings of traditional pharmacotherapy. The application of nanocarriers in the context of central nervous system disorders has been found to increase drug solubility, maintain active compounds in an undegraded state, and deliver active compounds through blood-brain barrier⁵. The use of neuro-nanocarriers to enhance neuroprotection and neuro regeneration is becoming increasingly popular to aid functional recovery mechanisms that are fundamental to an effective rehabilitation⁶. Also, the improvement of blood-brain barrier physiology modulation and brain-target delivery has further expanded the treatment power of nerve nanomedicine⁷.

Advanced nanomedicine delivery systems have been found to be promising in the management of cardiovascular diseases through enhancing therapeutic precision and systemic toxicity. The targeted strategies of delivery, both viral and non-viral, enable a localized action of drugs in cardiac tissues at the highest possible efficacy and with minimum adverse effects⁸. These inventions aid in maintaining cardiovascular stability, which is a requirement in the safe and effective physiotherapy measures in patients with neuro-cardiac complications. Moreover, nanomedicine has been demonstrated to be involved in neuroprotection, neuro regeneration and regulation of blood-brain barrier, which makes it highly applicable in neurological and cardiovascular field⁹.

Recent advancements in precision nanomedicine have provided some additional advances to the field by the application of bio-inspired nanosystems, such as cell membrane-coated nanocarriers. These systems increase biocompatibility, immune evasion and tissue-specific targeting providing novel possibilities to treat complex diseases with many organs systems¹⁰.

With such tremendous progress, the current literature remains largely biased on the outcomes of neurological or cardiovascular independent of each other. It is still missing to have integrated reviews that investigate the impact of the advanced drug delivery methods in both rehabilitation and physiotherapy of the neuro-cardiac disorders. Since the functional recovery is largely dependent on physiological stability, symptom management, and patient tolerance to physical exercise, it is of utmost importance to learn about the role of optimized drug delivery in the framework of rehabilitation.

To analyze recent advances in drug delivery systems for neuro-cardiac disorders.

To assess the impact of advanced drug delivery approaches on rehabilitation and physiotherapy outcomes.

To analyze future directions for integrating advanced drug delivery strategies into neuro-cardiac rehabilitation practice.

2. Neuro-Cardiac Disorders: Pathophysiology and Clinical Overview

Neuro-cardiac disorders are a diverse heterogeneous group of disorders that develop as a result of the complex and bidirectional interaction between the central nervous system and the cardiovascular system. This reciprocal, what is known as the brain-heart axis, plays a critical role in ensuring cardiovascular homeostasis and cardiovascular adaptive physiological reactions. The autonomic nervous system is the major mediator of this axis as it controls the heart rate, blood pressure, myocardial contractility and vascular tone. Autonomic imbalance especially after neurological insult or chronic neurological illness has been highly linked to elevated cardiovascular risk and poor clinical outcomes¹¹. The modifications in heart rate variability and sympathetic overactivation are factors that promote cardiac instability and arrhythmogenesis, as well as, poor cardiovascular adaptability, which have significant implication on rehabilitation.

Pathophysiology of neuro-cardiac disorders is majorly associated with neuroinflammation and oxidative stress. Acute and chronic injuries to the nervous system provoke inflammatory signals, which result in hyperproduction of reactive oxygen species, endothelial malfunction and microvascular damage. Such processes do not just cause neuronal damage, but the secondary

Advanced Drug Delivery Approaches for Neuro-Cardiac Disorders: Implications for Rehabilitation and Physiotherapy Outcomes. cardiovascular impairment by systemic inflammatory reactions and vascular dysregulation¹². Oxidative stress also increases the ischemia-reperfusion injury, which supports the interdependence between neurological and cardiovascular pathology. These molecular and vascular changes produce undesirable effects on cerebral perfusion and myocardial functioning, thus restricting the potential of functional recovery.¹³

The neuro-cardiac interface is represented by a number of clinical conditions. The neuro-cardiac condition of stroke-related cardiac dysfunction is considered to be one of the most well-researched. Neurogenic myocardial injury, arrhythmias, stress cardiomyopathy and sudden cardiac may occur as a result of autonomic imbalance and catecholamine overflow caused by acute cerebrovascular events¹⁴.

These cardiovascular problems are serious challenges that lead to morbidity and mortality and present a significant problem to the rehabilitation process, with hemodynamic instability potentially limiting the intensity of exercise and the progression of therapy. Another clinical sign of neuro-cardiac is heart failure with neurological implication. Reduced cardiac output and changes in cerebral perfusion are known to produce cognitive, autonomic, and central nervous system resilience impairment. The interdependence between heart failure and brain dysfunction has been identified as an independent clinical phenomenon that needs a combined approach in management¹⁵. Patients with heart failure frequently exhibit deficits in attention, executive function, and motor coordination, which can impair participation in rehabilitation and reduce functional gains.

The neurodegenerative disorders also demonstrate the clinical significance of neuro-cardiac interaction. Progressive autonomic dysfunction is a correlative factor of many neurodegenerative conditions resulting in orthostatic hypotension, abnormal heart rate, and cardiovascular reflexes. These upheavals augment the chance of falls, exhaustibility and exercise intolerance, making physiotherapy interventions, and the long-term preservation of functional complexity. Notably, neuro-cardiac disorders are moderated by demographic and biological factors that determine the severity of disorders and their progression. The loss of vascular integrity, inflammatory processes and neuroendocrine control in old age predispose individuals to neuro-damaging processes and cardiovascular diseases¹⁶. Also, sex-specific variations impact the ischemic stroke pathology and cardiovascular outcomes, which add to the clinical presentation variability and recovery patterns.

Neuro-cardiac disorders directly influence the results of rehabilitation and physiotherapy, and their clinical manifestations. The typical symptoms of patients include motor disability, diminished aerobic capacity, cardiovascular instability, fatigue, and impaired thinking. The autonomic abnormalities could lead to the exaggeration of blood pressure variability and irregular heart rate responses during physical activity, which predisposes the adverse events in the exercise-based

rehabilitation. Fatigue and cognitive impairment also lower levels of therapy compliance and narrow the severity and span of rehabilitation time, which subsequently impacts on functional autonomy and quality of life.

The development of integrative and data-driven medical methods has underscored the possibility of computational algorithms, such as machine learning, to enhance the determination and management of intricate neuro-cardiac diseases. Such methods could be used to conduct an early detection of the high-risk patients, to optimize the personalized treatment process, and to support the multidisciplinary decision-making in the field of neurological, cardiovascular, and rehabilitation fields of work. This kind of innovations highlights the importance of co-ordinated models of care that consider the pathophysiological processes, as well as the functional outcomes.

3. Pharmacological Management and Limitations of Conventional Drug Delivery

The pharmacological management of neuro-cardiac disorders is a primary part of the treatment, and the therapeutic strategy should focus on preventing neurological damage, maintaining cardiovascular activity, and eliminating secondary complication of the system. Neuroprotective pharmacotherapy has found application in such conditions as traumatic brain injury, stroke, neurodevelopmental disorders, and has been used based on the mechanisms of cerebral edema, excitotoxicity, oxidative stress, and neurotransmitter imbalance. One of the clinical guidelines points to the use of early pharmacological stabilization to minimize secondary brain injury and to preserve systemic homeostasis, especially in pediatric and adolescent patients¹⁷. Parallel to this, cardioprotective agents like beta-blockers, renin-angiotensin system inhibitors and metabolic modulators are regularly administered in order to enhance cardiac working, diminish neurohormonal activation, and restrict cardiovascular degradation.

The recent advancements in the cardioprotective therapy have expanded the range of pharmacological strategies by going beyond the traditional hemodynamic regulation. Physiological benefits The Sodium-glucose cotransporter 2 inhibitors have shown considerable cardiovascular and renal advantages, which are mediated by metabolism reprogramming, autophagy activation, and nutrient deprivation signaling pathways¹⁸. Although they have therapeutic potential, the clinical efficacy of these agents is still dependent on the efficacy of the delivery, bioavailability to the tissues and compliance in patients who may have concomitant neurological disability.

There are significant challenges in neuro-cardiac disorders in conventional drugs delivery method mainly through oral and systemic administration. Orally administered drugs tend to be undermined by the non-predictable gastrointestinal absorption, hepatic first-pass metabolism, and unstable plasma drug levels. These are further complicated by neurologically impaired patients

Advanced Drug Delivery Approaches for Neuro-Cardiac Disorders: Implications for Rehabilitation and Physiotherapy Outcomes. whose impaired consciousness, dysphagia, autonomic instability, and dysmotile gastrointestinal tract complicates drug administration and dose precision. The systemic administration puts even more risk to the off-target exposure which adds to the adverse effects that may impede the participation in the rehabilitation. One of the greatest weaknesses of neuropharmacological treatment is the limited permeability of blood-brain barrier. This barrier is highly specialized structurally and functionally, which restricts the uptake of most therapeutic agents into the central nervous system resulting in inoperative drug concentrations in neural target locations¹⁹. Tight junctions, efflux transporter and enzymatic barriers further expose central drugs, which commonly require increased systemic doses to produce the effects of therapy. This is inadequate targeting of the tissue which decreases neuroprotective effect and increases systemic toxicity especially at the cardiovascular system. The most common pharmacological and delivery-associated obstacles, such as inadequate penetration of the blood-brain barrier, systemic side effects, and adherence issues, have been identified as the major barriers to rehabilitation and physiotherapy in neuro-cardiac disorders, as indicated in Table 1.

Table 1: Limitations of Conventional Pharmacological Drug Delivery in Neuro-Cardiac Disorders

Aspect	Key Limitation	Impact on Rehabilitation & Physiotherapy	Source
Neuroprotective therapy	Limited CNS penetration despite early pharmacological intervention	Delayed motor recovery and incomplete neuroprotection	¹⁷
Cardioprotective drugs	Systemic exposure and metabolic side effects	Reduced exercise tolerance and increased fatigue	¹⁸
Blood-brain barrier	Restricted drug transport and active efflux mechanisms	Subtherapeutic neural drug levels impair recovery	¹⁹
Systemic adverse effects	Sedation, hypotension, and cognitive impairment	Reduced participation in physiotherapy programs	²⁰
Dosing burden	Frequent dosing and complex multidrug regimens	Poor long-term adherence affects outcomes	²¹
Medication nonadherence	Cognitive impairment and treatment fatigue	Increased morbidity and reduced functional gains	^{22, 23}

There are system effects of adverse effects of conventional pharmacotherapy that directly affect the results of rehabilitation and physiotherapy. The cardiovascular drugs can cause hypotension, bradycardia, fatigue, or exercise intolerance, and neuroactive agents are often related to sedation, poor coordination, and cognitive limitations. These effects restrict the ability of the patients to participate safely and productively in the organized physiotherapy programs. Pharmacological manipulation of dopaminergic systems and other neurotransmitters in neurobehavioral and attentional disorders may further affect the motor performance, fatigue and interest in rehabilitation treatment in the persons being treated as well as the perception of fatigue and interest in rehabilitation treatment, which will in turn be influenced by the manner in which the fatigue and interest levels towards rehabilitation treatment are altered²⁰.

Difficulties with dosing schedule and long time use of medication also hinder therapeutic effectiveness. Neuro-cardiac disorders can be complicated and involve multiple-drug regimens and high dosing schedules which can be a big burden to patients and caregivers. Weak compliance has been repeatedly linked to unfavorable cardiovascular event, elevated hospital readmission, and decreased functional recovery²¹. The cognitive impairment, medicines effects, and long-term treatment cumulative needs play a major role in nonadherence.

Systematic review evidence has shown that interventions aimed at enhancing medication adherence have inconsistent and generally small effects especially in chronic neurological or cardiovascular disease populations²². In cardiovascular patients, primary nonadherence to acute events is a serious concern and LTCs have significant morbidity, mortality, and quality of life effects on the long-term basis of the condition²³. These results highlight the intrinsic constraints of traditional approaches to drugs delivery which have been based on the premise of long-term patient adherence and systemic exposure.

4. Advanced Drug Delivery Approaches in Neuro-Cardiac Disorders

More complex methods of drug delivery have recently become a prominent means of overcoming the pharmacodynamics and pharmacokinetic constraints of current treatment in neuro-cardiac conditions. The delivery systems that are traditional often lack sufficient tissue specificity, bio-availability and increased toxicity of the systemic effect, which undermines therapeutic efficacy. In comparison, more sophisticated delivery systems are aimed at increasing drug stability, biodistribution and safety profiles, which increase therapeutic control of neural and cardiac targets in complicated disease settings.

Another significant development in this area is nanotechnology drug delivery systems, which polymeric

Advanced Drug Delivery Approaches for Neuro-Cardiac Disorders: Implications for Rehabilitation and Physiotherapy Outcomes. nanoparticles, lipid-based vectors and nanoscale composites have significant advantages over standard formulations. These systems enable the active pharmaceutical ingredients to be encapsulated, preventing early degradation and enhance solubility and circulation time which is especially beneficial in diseases with the brain-heart axis²⁴. Nanoparticles surface engineering also allows to control pharmacokinetic properties and contact with biological membranes, enhancing the consistency of therapeutic in chronic neuro-cardiac diseases. One of the most clinically proven nanotechnology platforms is liposomal drug delivery systems and has had a successful translational history. Liposomes are biocompatible vesicular carriers that can include hydrophilic and lipophilic drugs and permit large flexibility in the composition of the formulation and precise delivery by structural plasticity²⁵. Liposomal surface functionalization with targeting ligands can be used to target disease tissue and reduce exposure to non-

target organs, which is a critical factor in the neuro-cardiac disorders in which localized neuroprotective and cardioprotective actions are needed. Targeted drug delivery plans also increase the accuracy of the advanced delivery systems by increasing localization of therapeutic agents in the neural and cardiac tissues. Material science and processing technologies have made possible a fine control of carrier size, shape and surface chemistry which has resulted in tissue selectivity and therapeutic efficacy *in vivo*, with much higher efficacy levels than previously achievable, most often in a single methodology²⁶. This type of targeting is especially critical to drug delivery in order to surmount biological barriers and attain adequate levels of drugs at access points of neuro-cardiac pathology without augmenting systemic toxicity. Figure 1 shows the structural organization and transport pathways of the blood-brain barrier that apply to the advanced strategies of drug delivery.

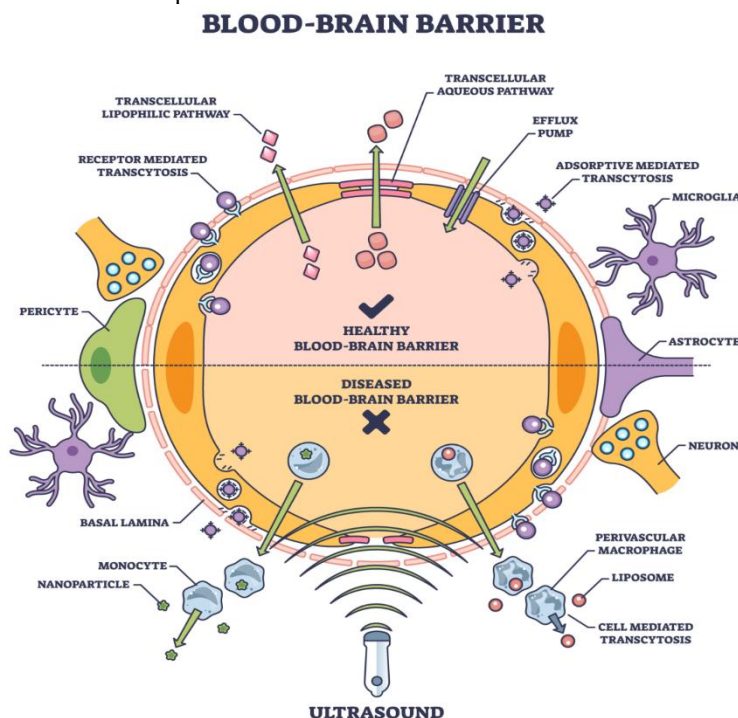


Figure 1: Structure and Transport Mechanisms of the Blood–Brain Barrier in Healthy and Diseased States
 Source: Adapted from ²⁷

Sustained release and controlled formulations can be regarded as another important aspect of advanced drug delivery. These systems are designed to sustain therapeutic levels of drugs over prolonged periods, thus decreasing the amount of doses per day and limiting the variability found in traditional administration²⁸ in the course of disease therapy over long periods. The ability of sustained-release platforms to reduce peak-induced toxicity and increase patient adherence by easing the treatment regimen is especially effective in patients with chronic neuro-cardiac diseases.

Other than nanoscale carriers, other delivery routes and fabrication technologies have broadened the number of advanced drug delivery methods. The process of

microfabrication has facilitated the production of new oral, injectable and implantable delivery vehicles²⁹ with a high level of spatial and time-controlled drug release. The injectable and implantable systems are particularly beneficial in patients with neurological or heart diseases because they offer long-term treatment by reducing patient adherence on a daily basis and enhancing continuity of care through such systems in rehabilitation. Stimuli-responsive drug delivery systems constitute a new category of intelligent therapeutic delivery systems that react to physiological/environmental stimuli using pH, temperature, or enzymatic activity, as an example³⁰. These systems enable the site and on demand release of drugs and enhance the precision of therapy and reduce

Advanced Drug Delivery Approaches for Neuro-Cardiac Disorders: Implications for Rehabilitation and Physiotherapy Outcomes. systemic exposure. Stimuli-responsive polymers provide dynamic control over drug delivery, which is compatible with the personalized medicine paradigms and offers opportunities to combine with rehabilitation regimes where the release of drugs can be coordinated with physiological needs.

The use of biologic and gene-based delivery strategies also increases the potential of the advanced drug delivery methods. Together with nanotechnology-based vectors, these approaches could allow targeted regulation of disease pathways on the molecular scale and provide opportunities of long-lasting and minimally invasive treatment of complex neuro-cardiac diseases.

5. Role of Rehabilitation and Physiotherapy in Neuro-Cardiac Conditions

Physiotherapy and rehabilitation are also vital aspects of caring neuro-cardiac patients since the functional recovery will be achieved through the concomitant optimization of neurological performance and cardiovascular stability. The general objectives of rehabilitation among this population group are to improve mobility and independence, enhance aerobic capacity and endurance, reduce secondary problems, and facilitate safe access to their normal daily activities. Structured rehabilitation is also being guided towards enhancement of exercise tolerance, symptom burden and quality of life in patients with heart failure and neurological comorbidities with increasing discussion over whether models of higher-intensity training can offer better clinical benefit when identified and monitored correctly. Complete early mobilization is often used in stroke populations in order to achieve faster functional recovery, but it should be implemented safely in accordance with the clinical status and separately on a case-by-case basis.

The motor recovery interventions of physiotherapy normally focus on task-oriented training, gait re-education, strength training, balance retraining, and progressive mobility training. The purposes of these approaches include neuromuscular control restoration, neuromuscular control prevention, and functional independence. The use of active rehabilitation as early as possible is usually the aim of clinical practice, but it has been indicated that timing, dose, and patient selection are essential to maximize the results and prevent negative physiological stressors³¹. Motor rehabilitation in neuro-cardiac patients will have to be modified to cardiovascular tolerance and autonomic stability in order to maintain safety as the activity level advances.

One of the primary rehabilitation areas under neuro-cardiac conditions is cardiovascular conditioning. In this group, the prescription of exercise should be tailored carefully with regard to the intensity, duration, and

advancement depending on the level of the functional condition, cardiac reserve, and neurological deficit³². Individualized rehabilitative approaches and organized exercise are included in multidisciplinary management of heart failure by guidelines and especially used in chronic and decompensated forms of the disease³³. Prescription practice of aerobic exercise during stroke rehabilitation does not significantly differ between physiotherapists, which is why there is a necessity of standardized methods of prescription involving the integration of neurological limitations, cardiovascular risk stratification, and functional objectives³⁴. It has been shown that cardiorespiratory fitness generally decreases following the stroke and that conditioning interventions aimed at enhancing endurance and functional recovery are clinically important in this context³⁵.

Systematic analyses have been used to examine the effectiveness of cardiovascular exercise training in neurorehabilitation. Pre stroke cardiovascular exercise has been linked to elevated functional performance but differences in protocols and patient characteristics make interpolation into personal clinical recommendations risky³⁶. On the same note, structured aerobic methods such as interval-based training have also been suggested as potentially viable models in rehabilitation of heart failure, yet they need close follow-ups and risks evaluation of different patients especially those with a comorbid neurological impairment. All of these results demonstrate the need to implement cardiovascular conditioning as an inseparable element of neuro-cardiac rehabilitation, given the presence of safety limits and surveillance systems.

The control of fatigue and autonomic dysfunction is especially pertinent to neuro-cardiac rehabilitation since they are very strong determinants of the exercise tolerance and engagement. Sensation Autonomic nervous system dysfunction may have an adverse effect on cardiovascular response to activity, resulting in an abnormal heart rate regulation, blood pressure variability, and loss of physiological adaptability. There is systematic evidence that autonomic dysfunction is common in a variety of clinical situations and can also depend on the effect of medication which has consequences when it comes to monitoring and rehabilitation safety in therapeutic exercise³⁷. Fatigue can also reduce the participation in organized physiotherapy courses and compliance with more long-term rehabilitation programs, which highlights the significance of pacing techniques, symptom management, and personal responsibility in changing the intensity of the therapeutic process. Table 2 summarises some of the essential rehabilitation objectives, motor and cardiovascular therapies, and physiological factors that are applicable to the neuro-cardiac patients.

Table 2: Rehabilitation and Physiotherapy in Neuro-Cardiac Conditions

Focus Area	Key Elements	Clinical Importance	Source
Rehabilitation goals	Mobility, endurance, symptom control	Improves functional independence and quality of life	³¹
Motor recovery	Gait, balance, strength training	Restores neuromuscular function	³²
Cardiovascular conditioning	Aerobic and interval exercise	Enhances exercise tolerance and fitness	^{33, 34}
Fatigue & autonomic control	HR/BP monitoring, pacing	Ensures safe therapy participation	³⁶
Physiological stability	Graded progression, vital monitoring	Reduces risk during rehabilitation	³⁷

The condition of physiological stability is a vital requirement to successful rehabilitation among neuro-cardiac patients. The provision of physiotherapy must be safely done by a careful evaluation of hemodynamic response, autonomic balance and symptom thresholds during mobilization and exercises. The key factors that should guide progression of rehabilitation include vital sign monitoring, perceived exertion, and clinical warning signs to minimize the risk and maximise functional gains. Practically, the rehabilitation results are maximized when the physiotherapy interventions are provided in the context of the multidisciplinary approach including cardiovascular and neurological examination, exercise prescription, and progressive development as per patient tolerance.

6. Impact of Advanced Drug Delivery on Rehabilitation and Physiotherapy Outcomes

The novel drug delivery plans can play a significant role in the neuro-cardiac disorders rehabilitation and physiotherapy by improving the accuracy of the therapy and enhancing physiological preparedness to recuperate. Through enhancing the spatial and temporal accessibility of pharmacological agents, these solutions are capable of regulating major biological functions underlying a functional recovery, such as neuroplasticity, cardiovascular plasticity, pain control, and neuromuscular control. Through such effects, a more favorable environment of effective rehabilitation and sustained functional gains is created.

Stimulation of neuroplasticity is one of the key areas by which an improved rehabilitation outcome can be achieved using optimized pharmacological support. Neuroplasticity is the basis of the ability of the brain to restructure neural circuits in reaction to an injury and therapeutic intervention. Task-specific training and physiotherapy can be complemented with pharmacological agents which assist synaptic remodelling, neuronal excitability, and adaptive cortical reorganisation. Translational and clinical research has demonstrated that neuroplasticity is a key driver of meaningful functional recovery, especially during post-stroke and neurotrauma recovery, and that timely and specific interventions are crucial in order to harness neuroplasticity to achieve meaningful functional

recovery³⁸. Existing sophisticated delivery methods can help enhance such impacts since they offer a persistent and localized exposure to drugs within critical periods of rehabilitation.

Better cardiovascular response and exercise tolerance are other results which are affected by the optimization of the drug delivery. Neuro-cardiac patients rely on cardiovascular conditioning as one of the foundation of rehabilitation but the limitation is usually the poor exercise tolerance and hemodynamic fluctuations. Physiological responses to exercise can be improved with pharmacological measures that increase myocardial performance, vascular functioning, and metabolic flexibility that allows increased-intensity and longer-duration physiotherapy. It has been found that exercise-based interventions have the general cardiovascular effects of increased aerobic capacity and decreased cardiovascular risk, which is necessary to promote the process of rehabilitation^{39, 40}. Such benefits can be improved by the development of advanced systems of drug delivery that will reduce the side effects of the systems when administered in the body and stabilize the cardiovascular reaction to physical activity.

The decrease in pain, spasticity and fatigue is very important in enhancing patient involvement in physiotherapy. Abnormal muscle tone and pain syndromes are the typical obstacles to successful rehabilitation, which usually restrict the quality of movement and the ability to exercise. The analgesic and neuromodulatory agents can be better targeted and maintained with the purpose of pain reduction and spasticity, which would then lead to active motor training. Optimized pharmacological control is necessary in the case of complex pain conditions like complex regional pain syndrome, to facilitate functional rehabilitation and avoid long-term disability⁴¹. Figure 2 demonstrates the relationship between neuroplasticity that is triggered by exercise and the outcomes of rehabilitation. Likewise, the active development of spasticity under the influence of high-quality pharmacotherapy can increase the range of movement of the joint, muscle control, and reaction to physiotherapeutic procedures⁴².

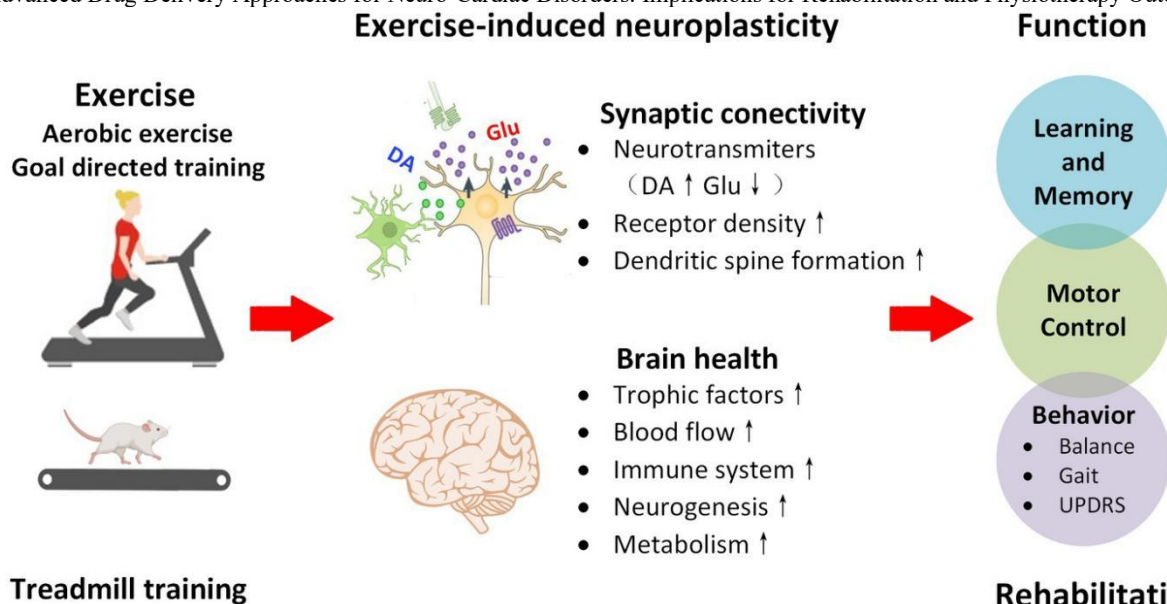


Figure 2: Exercise-Induced Neuroplasticity and Its Contribution to Functional Recovery During Rehabilitation
Source: Adapted from ⁴³

Future drug delivery plans can play a significant role in measuring the results of rehabilitation and physiotherapy by incorporating increased therapeutic accuracy and physiological fitness to recovery in neuro-cardiac disorders. Through enhancement of the spatial and temporal accessibility of pharmacological agents, the approaches will be able to regulate the key biological processes underlying functional recovery, such as neuroplasticity, cardiovascular adaptation, pain management, and neuromuscular control. These effects produce a more optimal rehabilitation and functional gains that are maintained.

Optimization of neuroplasticity is also one of the main mechanisms in which optimized pharmacological assistance will be able to enhance the results of rehabilitation. Neuroplasticity is the basis of the ability of the brain to rearrange neural circuits during injury and during therapeutic intervention. Task-specific training and physiotherapy can be enhanced with the help of pharmacological agents that maintain synaptic remodeling, neuronal excitability and cortical reorganization. Translational and clinical research findings reveal that functional recovery, especially in post-stroke and neurotrauma rehabilitation, is significantly dependent on the ability to harness neuroplasticity, by exploiting the right time and location in between the events of the incident and the therapeutic interaction⁴⁴. These effects can be further reinforced with the help of advanced delivery systems that can guarantee the long-term and localized exposure to drugs during critical periods of rehabilitation.

7. Challenges, Limitations, and Future Perspectives

Despite the fact that the advanced drug delivery systems have greatly increased the therapeutic capabilities in the disorders of the nervous system and the heart, several scientific, regulatory, and socioeconomic issues still restrict their common clinical application⁴⁵. The benefits

of nanomedicine-based platforms include better targeting, controlled release and less systemic toxicity but concerns about safety, long-term translatability and cost-efficacy are significant impediments to its widespread use, especially in the rehabilitation-focused care environment.

The long-term efficacy and safety are the major issues of clinical translation of nanomedicine. Although a number of nanodrugs have been successfully granted regulatory approval, most of the advanced delivery systems are still in investigational stages with little long-term human data in existence⁴⁶. The risks that can be expected are immunogenicity, unwanted tissue retention, changes in pharmacokinetic profiles, and slow toxicity after chronic doses⁴⁷. These issues are particularly important in neuro-cardiac conditions where rehabilitation benefits may have to be maintained by long-term pharmacological support. Strict post-marketing surveillance and long term safety trials are thus critical in instilling confidence on such technologies.

The limitation of scalability of advanced drug delivery systems is also enhanced by translation and manufacturing issues. Although some of these targeted delivery platforms have shown promising preclinical performance, they decrease in reproducibility and variation in performance when scaled-up and in clinical testing. The oncology area experience suggests that the complex designs of nanocarriers may be hampered by challenges regarding manufacturing consistency, stability, and compliance with regulatory authorities, which prevents their transition to laboratory development and clinical practice⁴⁸. Table 3 summarizes the safety, regulatory, economic, and translational barriers that are important in facilitating the successful implementation of advanced drug delivery systems in neuro-cardiac rehabilitation. The same problem is expected in the neuro-cardiac therapeutics because the

Advanced Drug Delivery Approaches for Neuro-Cardiac Disorders: Implications for Rehabilitation and Physiotherapy Outcomes. predictable and reliable delivery is important to facilitate the safe rehabilitation efforts.

Table 3: Challenges, Limitations, and Future Perspectives of Advanced Drug Delivery in Neuro-Cardiac Disorders

Category	Key Issue	Impact on Clinical Translation and Rehabilitation	Source
Safety and long-term efficacy	Limited long-term human data; risks of immunogenicity and tissue accumulation	Restricts chronic use needed to sustain rehabilitation benefits	45
Translational and manufacturing barriers	Variability in scale-up, stability, and reproducibility	Delays clinical adoption and limits reliable integration into rehabilitation care	46
Regulatory complexity	Lack of standardized frameworks for nanomedicines	Slows approval and results in fragmented clinical implementation	47
Economic constraints	High development costs and elevated pricing	Limits accessibility and cost-effectiveness in long-term rehabilitation programs	48
Ethical and digital challenges	Limited transparency and explainability of AI-driven decisions	Raises concerns regarding trust and safety in personalized rehabilitation	49
Future perspectives	Personalized, smart, and adaptive delivery systems	Potential to enhance functional recovery when integrated with physiotherapy	45_49

The use of nanomedicine has its major limitation in regulatory complexity in approving and roll-out. Therapeutics that consist of nanoparticles are often not directly covered by standard regulatory frameworks that have been established to regulate small molecule drugs, making it more difficult to standardize and evaluate. Findings of the FDA-approved nanomedicines reviews highlight the necessity to integrate the characterization techniques, safety endpoints validation, and more transparent regulatory routes as a way to expedite clinical translation. In the absence of such reforms, the process of integrating sophisticated drug delivery technologies into the regular neuro-cardiac rehabilitation will continue to be dispersed and slow.

The feasibility of advanced therapeutics also depends on economic factors, such as cost, accessibility and affordability. Nanomedicine costs and development and manufacturing are very high, and this increases the prices leading to the issue of fair access in healthcare systems. Economic studies in other areas of disease have shown that high prices can greatly limit access by patients even when clinical value is well developed. In the case of neuro-cardiac rehabilitation where long term therapy and multidisciplinary care is frequently needed, cost-effective and reimbursement schemes will decisively impact on real-life applicability.

New digital and computational technologies provide important opportunities to find solutions to some of these challenges. It is possible that artificial intelligence can be used to optimize the design of drug delivery, stratification of patients, and personalization of dosing and real-time monitoring of therapeutic response. The clinical use of AI, however, presents ethical and regulatory issues of transparency, explainability, and accountability⁴⁹. These considerations are also especially relevant to the rehabilitation setting, where the use of individualized care

and clinical judgment is a key factor in maintaining trust and patient safety.

Going forward, the future advancements in the field of drug delivery have been predicted to be in the form of personalized, smart, and adaptive that can be incorporated along with rehabilitation strategies. These involve stimuli-responsive platforms, designs of patient-specific delivery, and systems that have the capacity to react dynamically to physiological variations during physical exercise⁵⁰. This will also demand tight collaboration between clinicians, physiotherapists, pharmacologists, engineers, economists, and regulatory experts to accomplish such approaches successfully. This organizational structure is critical to make sure that the technological innovation is transformed into the significant functional change and the improved quality of life of patients with the neuro-cardiac conditions.

8. Conclusion

Drug delivery strategies constitute an important translational pivot of pharmacological inventions and functional remedies in neuro-cardiac diseases. Instead of only increasing the bioavailability of drugs or targeting their effect, the technologies can transform the paradigm of rehabilitation, stabilizing physiological functioning, influencing recovery-relevant biological processes, and allowing patients to take an active part in physiotherapy and long-term rehabilitation efforts. Their physical merit thus does not only consist in the molecular specifics but in the ability to provide functional adjustment and adaptation over time through the inter-relationships of neural and cardiovascular systems in a dynamic, bi-directional relationship in which both nervous and cardiovascular functioning continuously depend on each other. These strategies can be used to increase neuroplastic potential, exercise tolerance, neuromuscular performance, and optimize the effect of structured physiotherapy by considering the rehabilitation timelines, exercise needs, and

patient variability. This would require an increased interdisciplinary effort on the part of pharmacologists, rehabilitation specialists, and biomedical engineers to come up with therapies concomitant to physiological stress, functional load, and recovery stage. The challenges of safety, regulations and accessibility will also need to be addressed in order to provide equal implementation. In conclusion, such an enabling technology as advanced drug delivery should be considered in terms of enhancement of efficacy of rehabilitation process, patient involvement, and adding some value to long-term functional independence and quality of life of a patient with neuro-cardiac disorders.

REFERENCE

- Omidian H, Babanejad N, Cubeddu LX. Nanosystems in cardiovascular medicine: advancements, applications, and future perspectives. *Pharmaceutics*. 2023 Jul 12;15(7):1935.
- Mittal KR, Pharasi N, Sarna B, Singh M, Rachana, Haider S, Singh SK, Dua K, Jha SK, Dey A, Ojha S. Nanotechnology-based drug delivery for the treatment of CNS disorders. *Translational Neuroscience*. 2022 Dec 31;13(1):527-46.
- Yang HM. Overcoming the Blood–Brain Barrier: Advanced Strategies in Targeted Drug Delivery for Neurodegenerative Diseases. *Pharmaceutics*. 2025 Aug 11;17(8):1041.
- Chen Q, Yu T, Gong J, Shan H. Advanced nanomedicine delivery systems for cardiovascular diseases: viral and non-viral strategies in targeted therapy. *Molecules*. 2025 Feb 19;30(4):962.
- Chauhan A, Mori D, Soniwala M, Prajapati B, Shah S. Neuro-nanocarriers: redefining treatment pathways for brain disorders. *BioNanoscience*. 2025 Mar;15(1):78.
- Liu S, Jin X, Ge Y, Dong J, Liu X, Pei X, Wang P, Wang B, Chang Y, Yu XA. Advances in brain-targeted delivery strategies and natural product-mediated enhancement of blood–brain barrier permeability. *Journal of Nanobiotechnology*. 2025 May 26;23(1):382.
- Krsek A, Jagodic A, Baticic L. Nanomedicine in Neuroprotection, Neuroregeneration, and Blood–Brain Barrier Modulation: A Narrative Review. *Medicina*. 2024 Aug 24;60(9):1384.
- Achar A, Myers R, Ghosh C. Drug delivery challenges in brain disorders across the blood–brain barrier: novel methods and future considerations for improved therapy. *Biomedicines*. 2021 Dec 4;9(12):1834.
- Iravani S, Varma RS. Advanced drug delivery micro-and nanosystems for cardiovascular diseases. *Molecules*. 2022 Sep 9;27(18):5843.
- Baig MS, Ahmad A, Pathan RR, Mishra RK. Precision nanomedicine with bio-inspired nanosystems: recent trends and challenges in mesenchymal stem cells membrane-coated bioengineered nanocarriers in targeted nanotherapeutics. *Journal of Xenobiotics*. 2024 Jun 24;14(3):827-72.
- Thayer JF, Yamamoto SS, Brosschot JF. The relationship of autonomic imbalance, heart rate variability and cardiovascular disease risk factors. *International journal of cardiology*. 2010 May 28;141(2):122-31.
- Wu L, Xiong X, Wu X, Ye Y, Jian Z, Zhi Z, Gu L. Targeting oxidative stress and inflammation to prevent ischemia-reperfusion injury. *Frontiers in molecular neuroscience*. 2020 Mar 5;13:28.
- Roy-O'Reilly M, McCullough LD. Age and sex are critical factors in ischemic stroke pathology. *Endocrinology*. 2018 Aug;159(8):3120-31.
- Sposato LA, Hilz MJ, Aspberg S, Murthy SB, Bahit MC, Hsieh CY, Sheppard MN, Scheitz JF, World Stroke Organisation Brain & Heart Task Force. Post-stroke cardiovascular complications and neurogenic cardiac injury: JACC state-of-the-art review. *Journal of the American College of Cardiology*. 2020 Dec 8;76(23):2768-85.
- Doehner W, Ural D, Haeusler KG, Čelutkienė J, Bestetti R, Cavusoglu Y, Pena-Duque MA, Glavas D, Iacoviello M, Laufs U, Alvear RM. Heart and brain interaction in patients with heart failure: overview and proposal for a taxonomy. A position paper from the Study Group on Heart and Brain Interaction of the Heart Failure Association. *European journal of heart failure*. 2018 Feb;20(2):199-215.
- Mathur P, Khanna AK, Cywinski JB, Maheshwari K, Naylor Jr DF, Papay FA. 2019 YEAR IN REVIEW: MACHINE LEARNING IN HEALTHCARE. Team BrainX, BrainX Community.
- Dohna-Schwake C, Rellensmann G, Mauer UM, Fitze G, Schmittenebecher P, Baumann F, Sommerfeldt D, Mentzel HJ, Hahn G, Klee D, Becke-Jakob K. Das Schädel-Hirn-Trauma im Kindes-und Jugendalter. S2k Leitlinie. AWMF-Leitlinien-Register. 2022(24-018).
- Packer M. Critical reanalysis of the mechanisms underlying the cardiorenal benefits of SGLT2 inhibitors and reaffirmation of the nutrient deprivation signaling/autophagy hypothesis. *Circulation*. 2022 Nov 1;146(18):1383-405.
- Singh S A, Vellapandian C. Structure of the blood brain barrier and its role in the transporters for the movement of substrates across the barriers. *Current Drug Metabolism*. 2023 Apr 1;24(4):250-69.
- Nieuwlaat R, Wilczynski N, Navarro T, Hobson N, Jeffery R, Keepanasseril A, Agoritsas T, Mistry N, Iorio A, Jack S, Sivaramalingam B. Interventions for enhancing medication adherence. *Cochrane database of systematic reviews*. 2014(11).
- MacDonald HJ, Kleppe R, Szigetvari PD, Haavik

- J. The dopamine hypothesis for ADHD: An evaluation of evidence accumulated from human studies and animal models. *Frontiers in Psychiatry*. 2024 Nov 15;15:1492126.
22. Jackevicius CA, Li P, Tu JV. Prevalence, predictors, and outcomes of primary nonadherence after acute myocardial infarction. *Circulation*. 2008 Feb 26;117(8):1028-36.
23. Ho PM, Bryson CL, Rumsfeld JS. Medication adherence: its importance in cardiovascular outcomes. *Circulation*. 2009 Jun 16;119(23):3028-35.
24. Patra JK, Das G, Fraceto LF, Campos EV, Rodriguez-Torres MD, Acosta-Torres LS, Diaz-Torres LA, Grillo R, Swamy MK, Sharma S, Habtemariam S. Nano based drug delivery systems: recent developments and future prospects. *Journal of nanobiotechnology*. 2018 Sep 19;16(1):71.
25. Allen TM, Cullis PR. Liposomal drug delivery systems: from concept to clinical applications. *Advanced drug delivery reviews*. 2013 Jan 1;65(1):36-48.
26. Zhang Y, Chan HF, Leong KW. Advanced materials and processing for drug delivery: the past and the future. *Advanced drug delivery reviews*. 2013 Jan 1;65(1):104-20.
27. Niazi SK. Non-invasive drug delivery across the blood-brain barrier: a prospective analysis. *Pharmaceutics*. 2023;15:2599.
28. Sant S, Tao SL, Fisher OZ, Xu Q, Peppas NA, Khademhosseini A. Microfabrication technologies for oral drug delivery. *Advanced drug delivery reviews*. 2012 May 1;64(6):496-507.
29. Park K. Controlled drug delivery systems: past forward and future back. *Journal of Controlled Release*. 2014 Sep 28;190:3-8.
30. Bawa P, Pillay V, Choonara YE, Du Toit LC. Stimuli-responsive polymers and their applications in drug delivery. *Biomedical materials*. 2009 Mar 5;4(2):022001.
31. Arena R, Myers J, Forman DE, Lavie CJ, Guazzi M. Should high-intensity-aerobic interval training become the clinical standard in heart failure?. *Heart failure reviews*. 2013 Jan;18(1):95-105.
32. Bernhardt J, English C, Johnson L, Cumming TB. Early mobilization after stroke: early adoption but limited evidence. *Stroke*. 2015 Apr;46(4):1141-6.
33. Mareev VY, Fomin IV, Ageev FT, Begrambekova YL, Vasyuk YA, Garganeeva AA, Gendlin GE, Glezer MG, Gautier SV, Dovzhenko TV, Kobalava ZD. Russian heart failure society, Russian society of cardiology. Russian scientific medical society of internal medicine guidelines for heart failure: chronic (CHF) and acute decompensated (ADHF). *Diagnosis, prevention and treatment. Kardiologiia*. 2018;58(6S):8-158.
34. Boyne P, Billinger S, MacKay-Lyons M, Barney B, Khoury J, Dunning K. Aerobic exercise prescription in stroke rehabilitation: a web-based survey of US physical therapists. *Journal of Neurologic Physical Therapy*. 2017 Apr 1;41(2):119-28.
35. Smith AC, Saunders DH, Mead G. Cardiorespiratory fitness after stroke: a systematic review. *International Journal of Stroke*. 2012 Aug;7(6):499-510.
36. Alvares GA, Quintana DS, Hickie IB, Guastella AJ. Autonomic nervous system dysfunction in psychiatric disorders and the impact of psychotropic medications: a systematic review and meta-analysis. *Journal of psychiatry and neuroscience*. 2016 Mar;41(2):89-104.
37. Stoller O, de Bruin ED, Knols RH, Hunt KJ. Effects of cardiovascular exercise early after stroke: systematic review and meta-analysis. *BMC neurology*. 2012 Jun 22;12(1):45.
38. Cramer SC, Sur M, Dobkin BH, O'Brien C, Sanger TD, Trojanowski JQ, Rumsey JM, Hicks R, Cameron J, Chen D, Chen WG. Harnessing neuroplasticity for clinical applications. *Brain*. 2011 Jun 1;134(6):1591-609.
39. Ward NS. Restoring brain function after stroke—bridging the gap between animals and humans. *Nature Reviews Neurology*. 2017 Apr;13(4):244-55.
40. Piepoli MF, Corrà U, Dendale P, Frederix I, Prescott E, Schmid JP, Cupples M, Deaton C, Doherty P, Giannuzzi P, Graham I. Challenges in secondary prevention after acute myocardial infarction: A call for action. *European journal of cardiovascular nursing*. 2017 Jun 1;16(5):369-80.
41. Lavie CJ, Arena R, Swift DL, Johannsen NM, Sui X, Lee DC, Earnest CP, Church TS, O'Keefe JH, Milani RV, Blair SN. Exercise and the cardiovascular system: clinical science and cardiovascular outcomes. *Circulation research*. 2015 Jul 3;117(2):207-19.
42. Ferraro MC, O'Connell NE, Sommer C, Goebel A, Bultitude JH, Cashin AG, Moseley GL, McAuley JH. Complex regional pain syndrome: advances in epidemiology, pathophysiology, diagnosis, and treatment. *The Lancet Neurology*. 2024 May 1;23(5):522-33.
43. Zikereya T, Shi K, Chen W. Goal-directed and habitual control: from circuits and functions to exercise-induced neuroplasticity targets for the treatment of Parkinson's disease. *Front Neurol*. 2023;14:1254447.
44. Pandyan A, Gregoric M, Barnes MP, Wood D, Wijck FV, Burridge J, Hermens H, Johnson GR. Spasticity: clinical perceptions, neurological realities and meaningful measurement. *Disability and rehabilitation*. 2005 Jan 1;27(1-2):2-6.
45. Ventola CL. Progress in nanomedicine: approved and investigational nanodrugs. *Pharmacy and Therapeutics*. 2017 Dec;42(12):742.
46. Rosenblum D, Joshi N, Tao W, Karp JM, Peer D.

Progress and challenges towards targeted delivery of cancer therapeutics. *Nature communications*. 2018 Apr 12;9(1):1410.

47. Bobo D, Robinson K, Islam J, Thurecht K, Corrie S. Nanoparticle-based medicines: a review of FDA-approved materials and clinical trials to date. *Pharmaceutical research*. 2016 Oct 1;33(10).

48. Etheridge ML, Campbell SA, Erdman AG, Haynes CL, Wolf SM, McCullough J. The big picture on nanomedicine: the state of investigational and approved

nanomedicine products. *Nanomedicine: nanotechnology, biology and medicine*. 2013 Jan 1;9(1):1-4.

49. Iyengar S, Tay-Teo K, Vogler S, Beyer P, Wiktor S, de Joncheere K, Hill S. Prices, costs, and affordability of new medicines for hepatitis C in 30 countries: an economic analysis. *PLoS medicine*. 2016 May 31;13(5):e1002032.

50. London AJ. Artificial intelligence and black-box medical decisions: accuracy versus explainability. *Hastings Center Report*. 2019 Jan;49(1):15-21