

# Qur'anic Spirituality and Cancer Patient Well-Being: A Bibliometric and Interpretative Study

Andri Nirwana<sup>1\*</sup>, Fauziyah Qurrota A'yun Tamami<sup>2</sup>, Trisno Susilo<sup>3</sup>, Faisal Husen Ismail<sup>4</sup>  
Muhammad Youssef Al Deek<sup>5</sup>, Muhammad Aamir Ali<sup>6</sup> and Mohamed Sharei Abouzeid<sup>7</sup>

<sup>1</sup>*Universitas Muhammadiyah Surakarta, Indonesia*

<sup>2</sup>*Universitas Muhammadiyah Surakarta, Indonesia*

<sup>3</sup>*Universitas Muhammadiyah Surakarta, Indonesia*

<sup>4</sup>*School of Humanities, Universiti Sains Malaysia, Penang, Malaysia*

<sup>5</sup>*Al-Quds University, Palestine*

<sup>6</sup>*ICON Training Centre, Qatar*

<sup>7</sup>*Prince of Songkla University, Thailand*

<sup>1</sup>*andri.nirwana@ums.ac.id*, <sup>2</sup>*o100230073@student.ums.ac.id*, <sup>3</sup>*g108240013@student.ums.ac.id*, <sup>4</sup>*faisalhu@usm.my*,  
<sup>5</sup>*mdeik@staff.alquds.edu*, <sup>6</sup>*aamir.ali@icontrainingcentre.qa* and <sup>7</sup>*mohamed.sh@psu.ac.th*

**Received: 28<sup>th</sup> Feb, 2026; Revised: 21<sup>st</sup> March 2026; Accepted: 9<sup>th</sup> April, 2026; Available Online: 20<sup>th</sup> April, 2026**

---

## ABSTRACT

This study aims to explore the role of Islamic spirituality in the well-being of cancer patients through a bibliometric analysis of current literature. Using data from Scopus from 1996 to 2024, the study analyzed the documents, citations, and networks of researchers and institutions involved. Software such as R/R-Studio, VOSViewer, and Microsoft Excel are used to process and visualize data. The results of this study show a significant increase in the number of publications related to this topic, reflecting the growing attention of the academic community. Analysis of the documents revealed that the United States and the United Kingdom were the largest contributors to the study, with a fairly high level of international collaboration. Network visualization shows that research focused on clinical, psychological, and quality of life aspects of cancer patients, with three main clusters reflecting population studies, risk factors, and psychological support. These findings confirm that Islamic spirituality provides significant emotional and psychological support for cancer patients, helping them find meaning, hope, and peace amid their struggles. The study emphasizes the importance of integrating Islamic spirituality in health care to improve the quality of life of cancer patients. Further research is needed to explore the effective implementation of Islamic spirituality in clinical practice and support patients in dealing with their illness. This research has limitations on articles indexed in Scopus, and it is recommended to include other databases in the future. In conclusion, the integration of Islamic spirituality in the care of cancer patients can have a significant positive impact and is expected to inspire research and clinical practice in the future.

**Keyword:** *Islamic Spirituality, Cancer Patient Well-being, Bibliometric Analysis, Holistic Care.*

**How to cite this article:** Nirwana A, Tamami FQA, Susilo T, Ismail FH, Al Deek MY, Ali MA, Abouzeid MS. Qur'anic Spirituality and Cancer Patient Well-Being: A Bibliometric and Interpretative Study. *Int J Drug Deliv Technol.* 2026;16(31s):110-122. DOI: 10.25258/ijddt.16.31s.14

**Source of support:** Nil.

**Conflict of interest:** None

---

## INTRODUCTION

Cancer is a chronic disease that affects not only patients' physical condition but also profoundly impacts their psychological, emotional, and spiritual well-being. In facing diagnosis and undergoing long-term treatment, cancer patients often experience anxiety, fear, and even a crisis of meaning in life (1). Therefore, a holistic approach to healthcare is essential, including the integration of spiritual dimensions as part of efforts to improve patient well-being.(2) Cancer is one of the most challenging diseases in global health, affecting millions of people every year. Cancer patients often experience a variety of physical, emotional, and spiritual problems during the course of their disease.(3) In response to this need, modern

healthcare increasingly recognizes the importance of a holistic approach that includes aspects of spirituality in the management of cancer patients.(4) Spirituality has been identified as an important component in the care of cancer patients, helping them find meaning, hope, and peace in the midst of their struggles.(5) In this context, Islamic spirituality offers a unique and profound framework to support the well-being of patients.(6) Islam, with its spiritual teachings and practices, can provide significant emotional and psychological resources for cancer patients who embrace this religion.

---

\*Author for Correspondence: *andri.nirwana@ums.ac.id*

One of the key reasons for integrating spirituality into cancer care is the increasing need for meaning and inner peace during illness.(7) Spirituality, particularly from an Islamic perspective, provides a framework for understanding suffering as a test and a means of drawing closer to Allah.(8) Values such as patience (*sabr*), trust in God (*tawakkul*), and hope (*raja'*) function as effective coping mechanisms in dealing with the psychological pressures associated with chronic illness.(9) Moreover, the development of academic research shows a growing interest in the relationship between spirituality and health.(10) This trend is driven by the recognition that conventional medical approaches alone are insufficient to address patients' psychosocial needs. Therefore, integrating spiritual aspects into healthcare—especially those grounded in Islamic values—has become increasingly relevant for both study and clinical application.

Based on a bibliometric analysis of literature indexed in Scopus from 1996 to 2024, there has been a significant increase in publications related to Islamic spirituality and the well-being of cancer patients.(11) Countries such as the United States and the United Kingdom are the leading contributors, with a relatively high level of international collaboration.(12) Furthermore, network visualization reveals that research focuses on several main clusters, including patient population studies, risk factors, and psychological support, all of which highlight the important role of spirituality in improving the quality of life of cancer patients.(13) In conclusion, Islamic spirituality has significant potential to support the emotional and psychological well-being of cancer patients.(14) The integration of spiritual values into healthcare not only helps patients find meaning, hope, and inner peace but also contributes to an overall improvement in their quality of life.(15) Therefore, further research is needed to develop effective implementation models so that Islamic spirituality can be optimally integrated into clinical practice in the future.

Often seen as a personal experience that includes meaning, purpose, and relationships, this study analyzes the concept of spirituality in the context of nursing and health, including in spirituality understood and applied by health care providers.(16) Factors that influence cultural competence in patient care through several things, including; attitudes, beliefs, and behaviors related to religiosity and spirituality among medical professionals.(17) Claudia, R (2020) explores the experience of colorectal cancer patients after treatment, including the impact of spirituality on recovery and long-term quality of life.(18) Research on the role of spirituality in health care has grown rapidly in recent decades, however, the specific contribution of Islamic spirituality to the well-being of cancer patients still requires further attention.(19) Bibliometric analysis, which involves a quantitative review of the academic literature, can provide valuable insights into research trends, knowledge gaps, and key contributions in the field.

Despite the growing number of studies on spirituality and health, there remains a significant gap in research specifically addressing Islamic spirituality in the context of cancer care. Much of the existing literature is dominated by general or Western perspectives on spirituality,(20) which may not fully capture the unique theological and cultural dimensions of Muslim patients. This gap highlights the need for more context-specific research that reflects Islamic beliefs, practices, and values in healthcare settings.(21) The importance of Islamic spirituality in cancer care is also rooted in its cultural and religious relevance for Muslim patients.(22) In many Muslim societies, religion plays a central role in shaping individuals' worldview, health behaviors, and responses to illness.(23) Practices such as prayer (*ṣalāh*), remembrance of God (*dhikr*), and recitation of the Qur'an are not only acts of worship but also sources of psychological comfort and resilience during illness.

Empirical findings from various studies indicate that patients who engage in spiritual practices tend to report lower levels of depression and anxiety, as well as higher levels of life satisfaction and acceptance of illness.(24) In the context of Islamic spirituality, these benefits are often associated with a stronger sense of divine connection, trust in God's decree, and the belief in spiritual rewards beyond physical suffering.(25) Such findings reinforce the role of spirituality as a protective factor in mental health among cancer patients.(26) From a clinical perspective, integrating Islamic spirituality into healthcare services requires a multidisciplinary approach involving healthcare professionals, chaplains, and family support systems.(27) Spiritual care can be incorporated through simple yet meaningful interventions, such as facilitating religious practices,(28) providing spiritual counseling, and creating a supportive environment that respects patients' beliefs.(29) This approach aligns with the concept of patient-centered care, which emphasizes the importance of addressing patients' holistic needs.

Therefore, expanding research on Islamic spirituality in cancer care is not only academically important but also practically necessary. Future studies should focus on developing standardized models, intervention frameworks, and measurable outcomes to assess the effectiveness of spiritual care in clinical settings.(30) By doing so, Islamic spirituality can move from being a complementary aspect to becoming an integral component of comprehensive cancer care.

This article aims to explore and analyze current literature focusing on the role of Islamic spirituality in the well-being of cancer patients. Using a bibliometric approach, this study will identify the main themes, methodology used, as well as developments and challenges in this research. Through this analysis, it is hoped that a more comprehensive understanding of how Islamic spirituality can be effectively integrated in the treatment of cancer patients, as well as inspire future research and clinical practice.

## RESEARCH METHODS

This research uses quantitative methods with a comprehensive bibliometric analysis approach, including document and network analysis. Data was collected through a Boolean search on the Scopus database from 1996 to 2024, conducted on May 22, 2024 at 6:00 p.m. For document, citation, and network analysis, R/R-Studio, VOSViewer, and Microsoft Excel software are used.

The stages of research include: researchers conduct a literature review to ensure the relevance of the research and identify gaps in bibliometric topics. The review also helped determine the right keywords for the scope of the study, then, a search using Boolean operators in Scopus ((TITLE-ABS-KEY ("ai") OR TITLE-ABS-KEY ("religion")) (TITLE-ABS-KEY (religion) AND TITLE-

ABS-KEY (cancer)) yielded 5,817 documents.(31) Next, filtration used the Boolean operators of Scopus (LIMIT-TO (EXACTKEYWORD, "Religion") OR LIMIT-TO (EXACTKEYWORD, "Cancer") OR LIMIT-TO (EXACTKEYWORD, "Islam")) AND (LIMIT-TO(DOCTYPE, "ar")) AND (LIMIT-TO (LANGUAGE, "English")) AND (LIMIT-TO (SRCTYPE, "j")) AND (LIMIT-TO (OA, "all")) resulting in 1,540 documents. And finally, this research was carried out with bibliometric analysis carried out using Scopus analyzer and R/R-Studio to identify the number of documents per year, documents by journal, author, affiliation, country, and field of study. Network visualization of documents is analyzed using VOSViewer and data processing is done with Microsoft Excel, as shown in Figure 1 Research Flow.

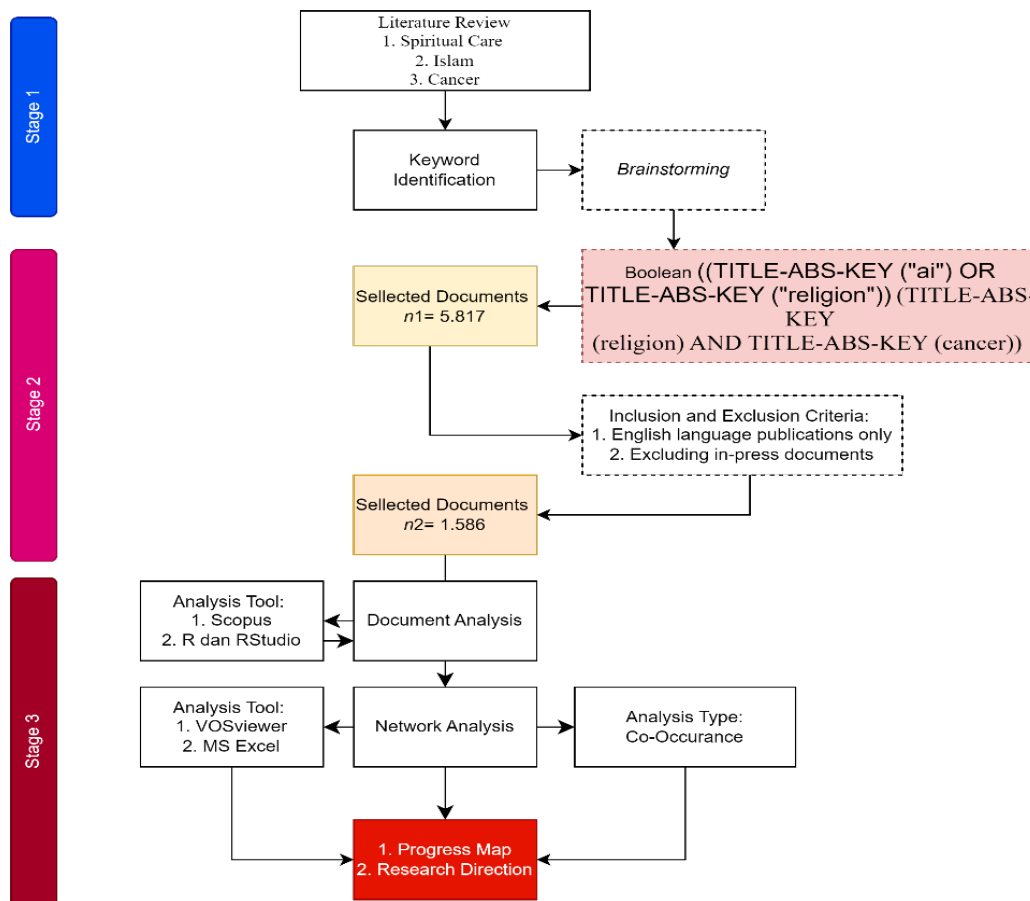


Figure 1 Research Flow

RESULTS AND DISCUSSION

a. Document Analysis

Table 2.1. 1 Summary of The Main Information shows that research in this field is progressing well in accordance with consistent annual growth, high citation impact, and strong collaboration among researchers. Main information about data provides the results of documents collected

over 28 years so that 18,145 contributing authors were found with the number of authors writing documents individually as many as 1,123 and 245 one author in one article. The average document was 4.25 indicating a high level of collaboration, and 13.91% of authors involved international collaboration, with a total of 4,432 types of article documents.

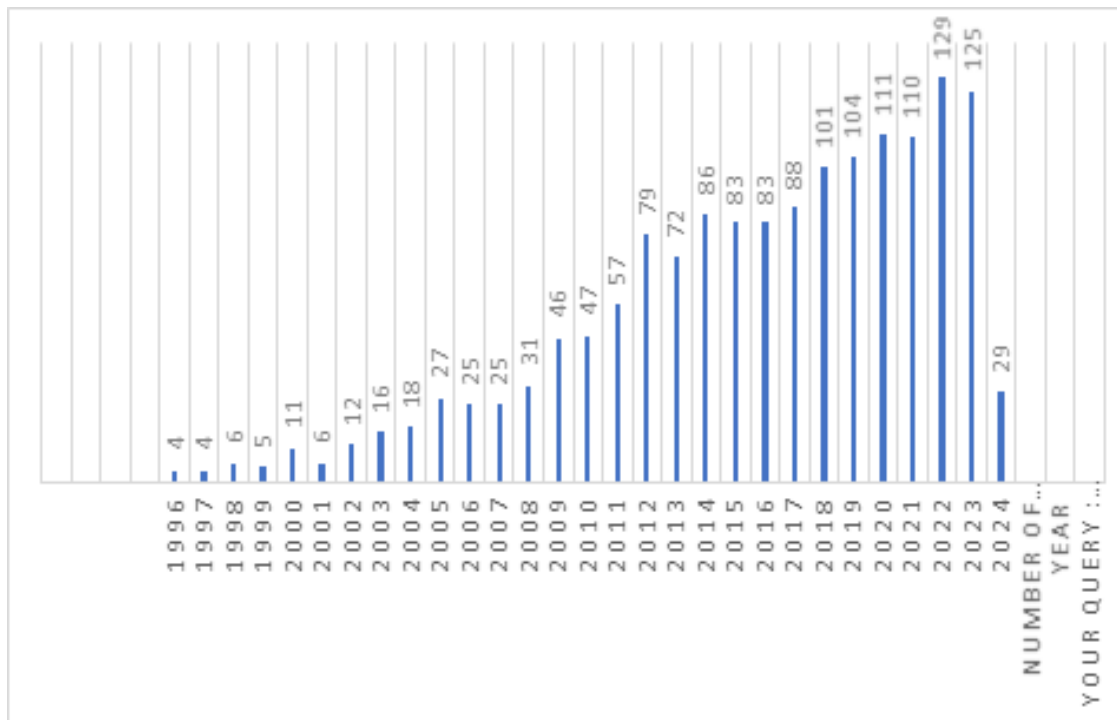
Table 2.1. 1 Summary of The Main Information

MAIN INFORMATION ABOUT DATA	
Timespan	1952:2024
Sources (Journals, Books, etc)	1644
Documents	5817
Annual Growth Rate %	6.5

Document Average Age	13.8
Average citations per doc	29.86
References	172790
DOCUMENT CONTENTS	
Keywords Plus (ID)	12390
Author's Keywords (DE)	6348
AUTHORS	
Authors	18145
Authors of single-authored docs	994
AUTHORS COLLABORATION	
Single-authored docs	1123
Co-Authors per Doc	4.25
International co-authorships %	13.91
DOCUMENT TYPES	
article	4432

Figure 2.1. 1 Year Charts is a bar graph that shows the number of documents published per year based on data generated from queries in the Scopus database. This graph covers the time period from 1996 to 2024. The years 1996-2007 showed that the number of publications each year in this period was relatively low and stable, with the number of documents never exceeding 12 documents per year, in

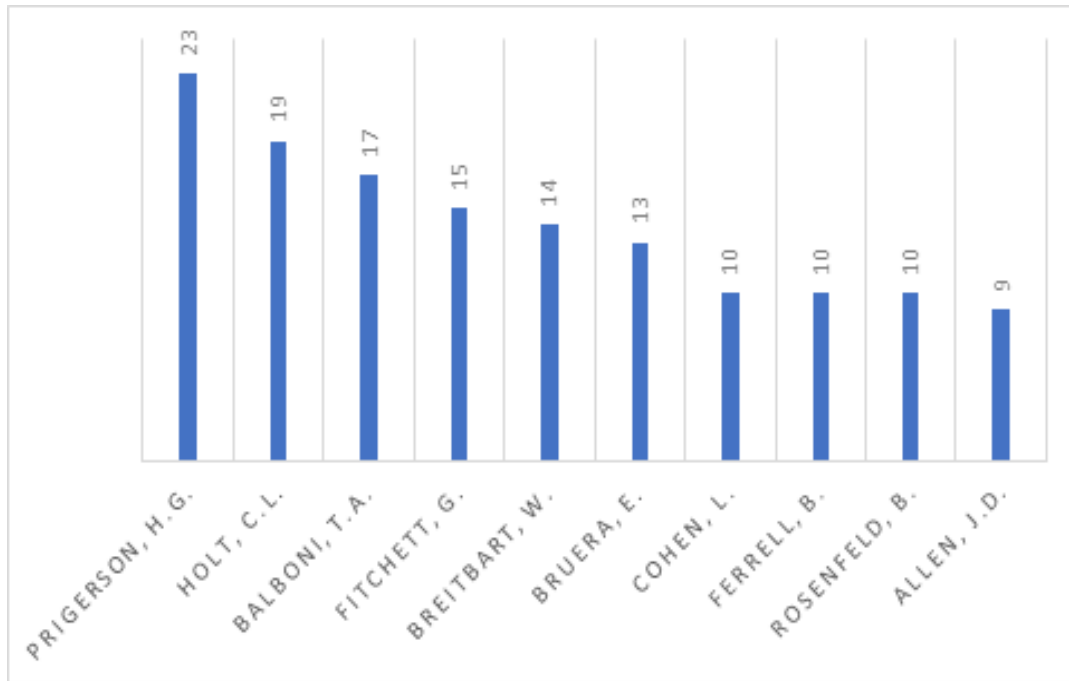
2007 the most publications with a total of 31 documents (32),(33). The significant annual growth rate starts from 2008 to 2023. This is consistent with the annual growth rate of 6.5% mentioned in the main data (34). The peak is in 2023 because it is able to produce 129 documents (35). This indicates a high increase in research activity in recent years.



**Figure 2.1. 1 Year Charts**

The number of prominent authors based on queries generated from the Scopus database shows that this graph displays the number of publications for each author from highest to lowest. Prigerson, H.G. has the highest number of publications with 23 and Allen, J.D. Has the lowest

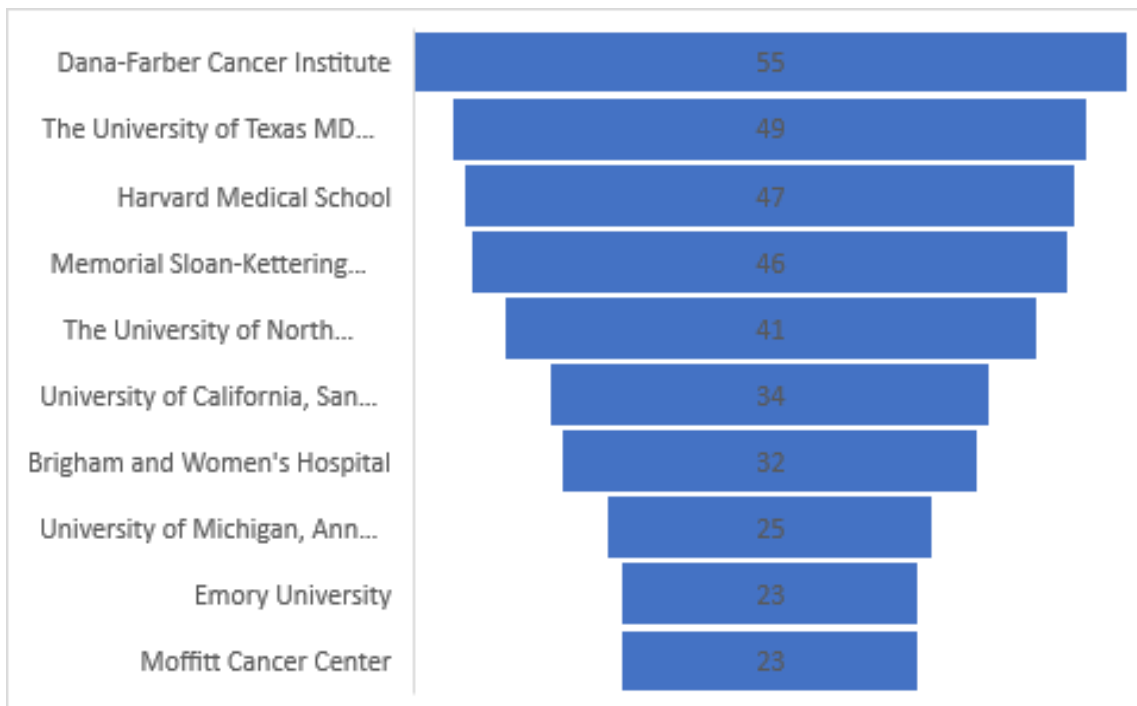
number of publications at 9 documents (36–38). The graph in Figure 2.1. 2 Name of Authors Charts shows that there are some very prolific authors in this field, who may be leaders or important figures in the research of the topic being analyzed.



**Figure 2.1. 2 Name of Authors Charts**

Horizontal bar graph in Figure 2.1. 3 Affiliation Charts show that the number of publications produced by several leading institutions in the field analyzed has a variable number of publications. Dana-Farber Cancer Institute took the top spot with 55 publications. This shows that the Dana-Farber Cancer Institute is the most prolific institution

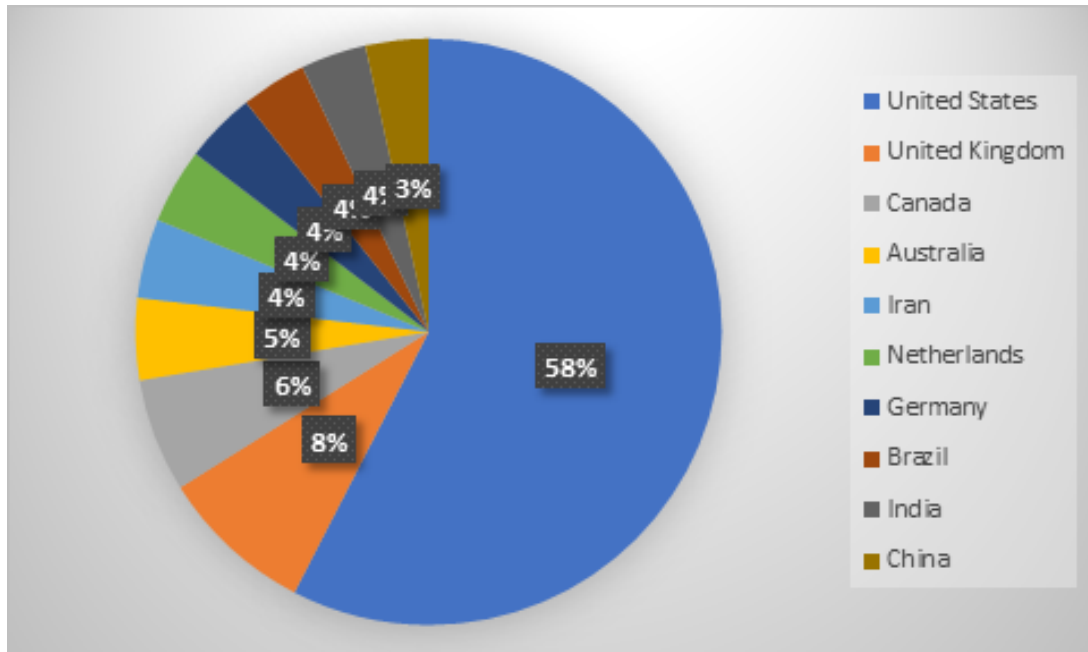
of research in this field, demonstrated by its significant contribution to research (39–41) (42). Then continued with other institutes with a lower but not so significant number of publications. All of the institutions listed show significant contributions to research in the fields analyzed, albeit with varying levels of productivity.



**Figure 2.1. 3 Affiliation Charts**

Figure 2.1. 4 Country Charts explains that the United States dominates in contribution with the largest share of 58% with a total of 764 documents, this shows that the US has very high research activity in the field that matches the title.(43) Then continued by the United Kingdom with a presentation of 8% and the number of publications as

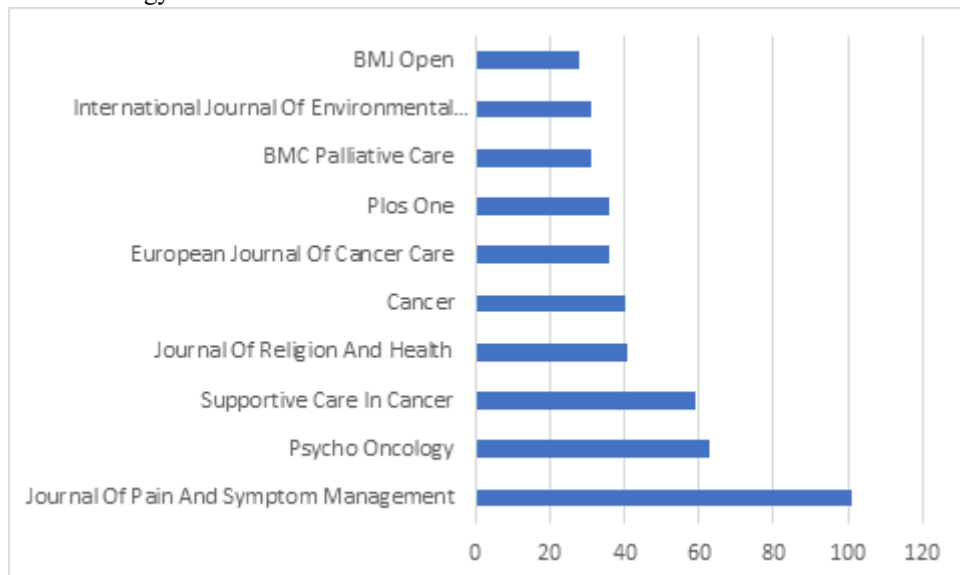
many as 113 documents, although far compared to the US, the UK still showed a significant contribution (44). Then followed by other countries such as Canada, Australia, Iran, and the Netherlands which both showed significant contributions but lower than the US and UK.



**Figure 2.1. 4 Country Charts**

The distribution of the number of scientific publications related to the topic "Islamic Spirituality in the Well-Being of Cancer Patients" in several leading academic journals is shown in Figure 2.1. 5 Source Charts, that this topic attracts attention from various scientific journals (45), especially on psychosocial aspects, symptom management, and support care in oncology. The Journal of Pain and

Symptom Management has a total of 102 document publications, followed by the journal Psycho Oncology with 63 documents, and Supportive Care in Cancer with 59 documents (46–48) (49). Other journals have a number of publications that are not so far away, and show a high contribution to these publications.

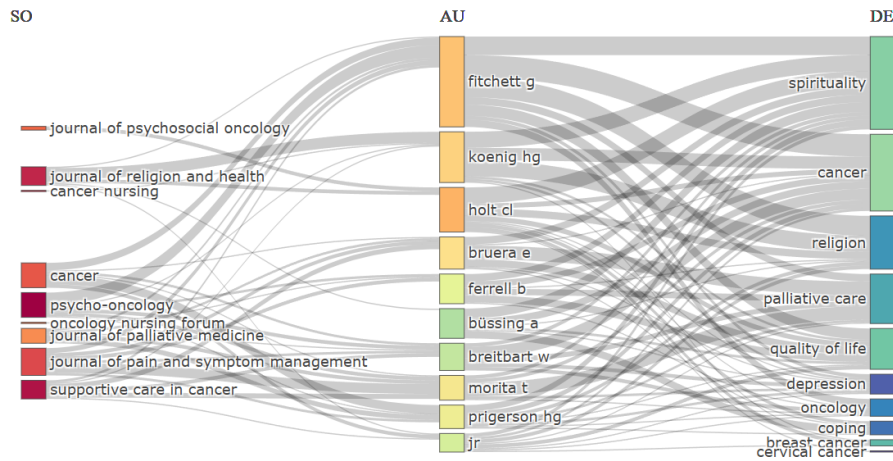


**Figure 2.1. 5 Source Charts**

The R/R-Studio device produces data obtained from the Three Field Plot which shows that there are 3 elements that can be examined, namely the name of the journal, the list of author names, and the theme or topic used.

The three emelens are interconnected and related to gray plot lines. The findings showed that the number of journals was 9, there were three journals that had the same number

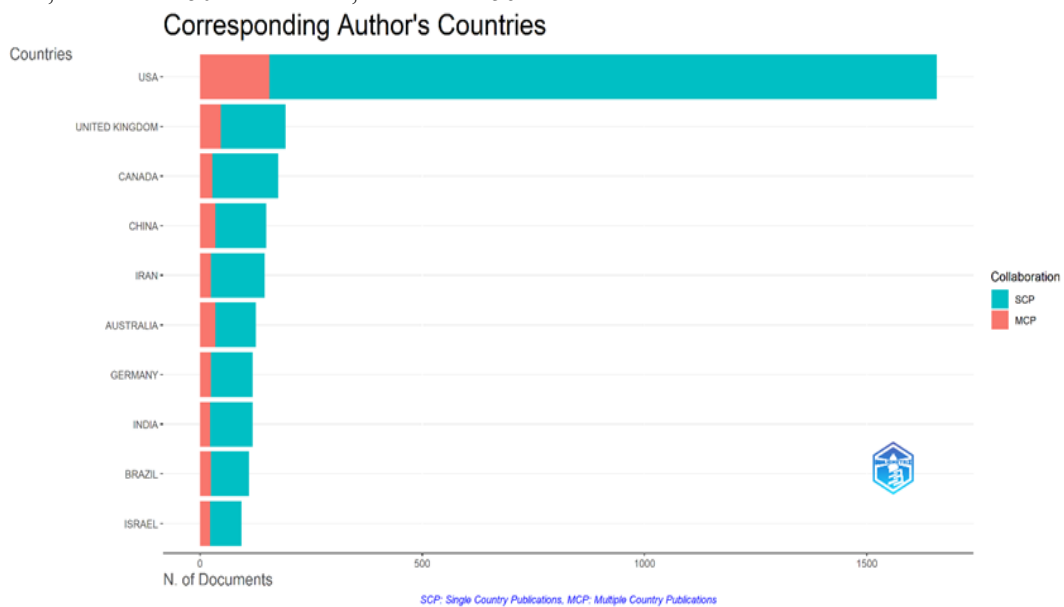
of outgoing flows, namely as many as 6 with each journal name, namely Cancer, Psycho-Oncology, and Journal of Pain and Symptom Management (50,51),(52). In Figure 2.1. 6 Three Field Plot shows the 10 authors involved in writing this publication with various topics available, the most discussed themes being Spirituality, Cancer, and Religion.



**Figure 2.1. 6 Three Field Plot**

Corresponding Author's Countries indicates the number of documents issued by correspondents from different countries. This diagram distinguishes between publications within a single country (SCP) and publications involving collaboration between countries (MCP-Multiple Country Publications). USA is the country with the highest number of publications, with SCP 1501 documents, and MCP 156

documents. Then followed by the UK with the number of SCP publications as many as 146 and MCP 47 documents.(53) The diagram in Figure 2.1. 7 Corresponding Authors Countries illustrates that international research collaborations exist, but domestic research still dominates in some of the countries involved.



**Figure 2.1. 7 Corresponding Authors Countries**

Citations in Table 2.1. 2 Most Global Document Cited show the oldest article results are Carver CS (1993), JPres Soc Psychol with a high number of citations of 1,331 due to the longer time to collect citations (54). In contrast, the latest article obtained by Griffiths RR (2016), J Psychopharmacol which shows a large impact in a short

time with a very high TC per year and the number of citations as much as 1,223 (55). These data suggest that older articles tend to have higher citation totals, and newer articles have higher average citations per year, indicating a large direct impact in the academic and research communities.

**Table 2.1. 2 Most Global Document Cited**

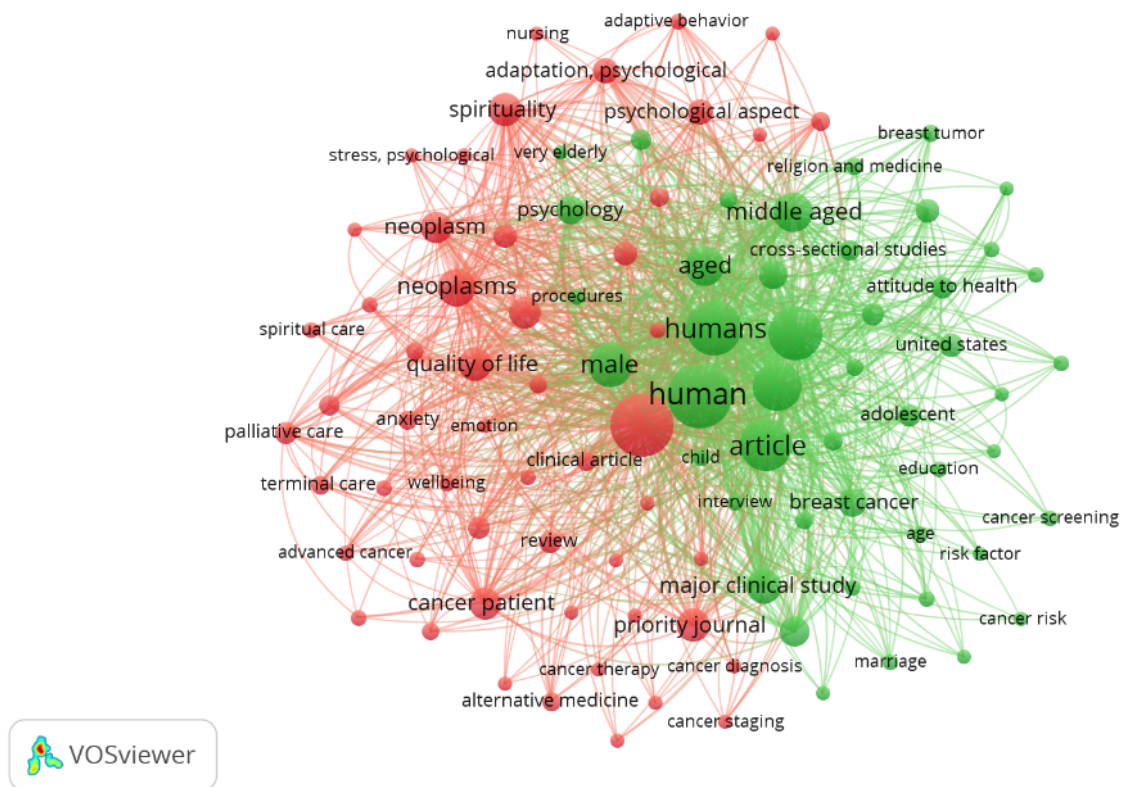
Paper	Total Citations	TC per Year
CARVER CS, 1993, J PERS SOC PSYCHOL	1331	41.59
PETERMAN AH, 2002, ANN BEHAV MED	1223	53.17
GRIFFITHS RR, 2016, J PSYCHOPHARMACOL	1097	121.89
POWELL LH, 2003, AM PSYCHOL	831	37.77
KREUTER MW, 2003, HEALTH EDUC BEHAV	826	37.55
BRENNAN F, 2007, ANESTH ANALG	708	39.33

CHOCHINOV HM, 2005, J CLIN ONCOL	694	34.70
BALBONI TA, 2007, J CLIN ONCOL	683	37.94
BRADY MJ, 1999, PSYCHO-ONCOLOGY	636	24.46
MISHRA SI, 2012, COCHRANE DATABASE SYST REV	609	46.85

**b. Network Analytics**

Network visualization in Figure 2.2. 1 Network Visualisation shows the relationship between various terms or concepts grouped in three clusters based on similarity of context or usage in the article or research. All clusters totaled 3, data obtained from the VOSViewer device to obtain analysis of co-occurrence with minimum cluster 15(56), (57–60). This visualization

shows that research in this field is very human-focused with many studies emphasizing the clinical, psychological, and quality of life aspects of patients. The green-colored cluster focuses more on population studies and risk factors, while the red cluster focuses more on psychological aspects and patient support. These three clusters have aspects that are often studied by others, and provide a holistic view of cancer care and research.



**Figure 2.2. 1 Network Visualisation**

Figure 2.2. 2 Overlay Visualisation this is an overlay network visualization created using VOSviewer, a software for creating and visualizing bibliometric networks. Code nodes in the network are color-coded based on a timeline from 2010 to 2016, with blue representing previous years and yellow representing more

recent years. Like the theme "Article, Human, and Male" which is the theme of the blue code, it shows a research topic that has rarely been researched for now. While the yellow code with the theme "Psychology, Spiritual Care, and Procedur" is a research that is still often discussed today.



research is limited to articles indexed in Google Scholar and Scopus. Future research should include other databases to track the growth of these subjects. The hope for the author in the future is to study more deeply and thoroughly related to Islamic Spirituality in the Welfare of Cancer Patients with Bibliometric Analysis, making it easier to read and quote other documents from Google Scholar, WoS, Scopus, and others.

Overall, the results of this study emphasize the importance of integrating Islamic spirituality in the care of cancer patients to improve their quality of life. Further research is needed to explore more deeply how Islamic spirituality can be effectively implemented in clinical practice and support patients in facing their disease journey. The research is expected to inspire better clinical practice and follow-up research in the future, focusing more on the spiritual needs of Muslim cancer patients.

#### Financial support and sponsorship

Nil.

#### Conflicts of interest

There are no conflicts of interest.

#### REFERENCE

- Rodrigues-Sobral MM, Carneiro LSF, Pupe CCB, Nascimento OJM do, Sampaio CA, Monteiro Junior RS. Influence of Islamic religion and spirituality on the well-being and quality of life of cancer patients: a meta-analysis and a hypothetical model of cerebral mechanisms. *J Bras Psiquiatr* [Internet]. 2022 Jun;71(2):141–8. Available from: [http://www.scielo.br/scielo.php?script=sci\\_arttext&pid=S0047-20852022000200141&tlng=en](http://www.scielo.br/scielo.php?script=sci_arttext&pid=S0047-20852022000200141&tlng=en)
- Chaar EA, Hallit S, Hajj A, Aaraj R, Kattan J, Jabbour H, et al. Evaluating the impact of spirituality on the quality of life, anxiety, and depression among patients with cancer: an observational transversal study. *Support Care Cancer* [Internet]. 2018 Aug 16;26(8):2581–90. Available from: <http://link.springer.com/10.1007/s00520-018-4089-1>
- Khodaveirdyzadeh R, Rahimi R, Rahmani A, Ghahramanian A, Kodayari N EJ. Spiritual/Religious Coping Strategies and their Relationship with Illness Adjustment among Iranian Breast Cancer Patients. *Asian Pac J Cancer Prev* [Internet]. 2016;17(8):4095–9. Available from: <https://pubmed.ncbi.nlm.nih.gov/27644667/>
- Huda N, Nurchayati S, Pranata S, Sansuwito T. Religion and Spirituality in Coping with Cancer among Muslims: A Literature Review. *Malaysian J Nurs* [Internet]. 2022;14(02):151–6. Available from: <https://ejournal.lucp.net/index.php/mjn/article/view/1655>
- Werdani YDW. Spiritual Well-Being and Optimism as Contributing Factors that Influence the Subjective Well-Being of Cancer Patients. *Indones J Cancer* [Internet]. 2022 Apr 1;16(1):16. Available from: <https://www.indonesianjournalofcancer.or.id/e-journal/index.php/ijoc/article/view/819>
- Yusuf T. Nonverbal Communication and its Effects on Human Relations: An Analysis from Surah Luqman. *QiST J Quran Tafseer Stud* [Internet]. 2025 Jan 29;4(1):139–50. Available from: <https://journals2.ums.ac.id/qist/article/view/6442>
- Khodijah S, Monang S. Phenomenological Study of Living Qur'an in the Tradition of Death and Reinterpretation of the Younger Generation on the Practice of Khataman Al-Qur'an at Bireuen Cemetery, Aceh. *QiST J Quran Tafseer Stud* [Internet]. 2025 Jun 24;4(1):351–66. Available from: <https://journals2.ums.ac.id/index.php/qist/article/view/10614>
- Khairuddin K, Rahman R, Perdamaian P, Suardi S, Wasalmi W, Srg S. The Concept of Wasathiyah in QS. 2:143 Analysis of the Ma'na Cum Maghza Approach. *QiST J Quran Tafseer Stud* [Internet]. 2025 May 17;4(1):287–306. Available from: <https://journals2.ums.ac.id/index.php/qist/article/view/9668>
- Aulia FN, Thobroni AY, Safira AI. A Thematic Analysis on Children's Rights in the Qur'an and Their Impact on Emotional Well-Being. *QiST J Quran Tafseer Stud* [Internet]. 2025 Jun 3;4(1):325–50. Available from: <https://journals2.ums.ac.id/index.php/qist/article/view/9701>
- Munir MS, Ramadhani RD, Masruhan M, Kholid IN. The Concept of Asbabun Nuzul in the Context of Warfare: A Tafsir Ahkam Study of QS. Al-Baqarah: 190-193 Based on Tafsir Al-Qurtubi. *QiST J Quran Tafseer Stud* [Internet]. 2025 Apr 24;4(1):241–66. Available from: <https://journals2.ums.ac.id/index.php/qist/article/view/9165>
- AN AN, . M, . M, . W. Bibliometric Analysis of Islamic Education and Character Development in Religious Education Practices in Indonesia. *Pakistan J Life Soc Sci* [Internet]. 2024;22(2). Available from: [https://pjlss.edu.pk/pdf\\_files/2024\\_2/1231-1245.pdf](https://pjlss.edu.pk/pdf_files/2024_2/1231-1245.pdf)
- Nirwana AN A, Mahmudulhassan M, Ali M, Muthoifin M, Waston W, Bin S. Senathirajah AR. The Intersection of Quranic Studies and Modern Technology: A Bibliometric Analysis of Academic Publications from 2000 to 2024. *Qubahan Acad J* [Internet]. 2024 Dec 12;4(4):178–90. Available from: <https://journal.qubahan.com/index.php/qaj/article/view/981>
- Al Kausar A. The Qur'an for All: A Historical Analysis of Bengali Translations and Tafsir. *QiST J Quran Tafseer Stud* [Internet]. 2025 Jan 28;4(1):125–38. Available from: <https://journals2.ums.ac.id/qist/article/view/7389>
- Atika N, Salminawati S, Dahlan Z. Integration of

- Islamic Religious Education, Al Quran Science and General School Subjects at Adzkie Babalan Integrated Islamic Junior High School, Langkat Regency. *QiST J Quran Tafseer Stud* [Internet]. 2025 Apr 4;4(1):221–40. Available from: <https://journals2.ums.ac.id/index.php/qist/article/view/8905>
15. Siyamto MRR, Rhain A, Ilham M, Waktu S. Public Reception of Qur'an Calligraphy at the Iska Mayang Grand Mosque in Sukoharjo. *QiST J Quran Tafseer Stud* [Internet]. 2024 Dec 16;4(1):23–40. Available from: <https://journals2.ums.ac.id/qist/article/view/7866>
  16. Lalani N. Meanings and interpretations of spirituality in nursing and health. *Religions*. 2020;11(9):1–14.
  17. Dillard V, Moss J, Padgett N, Tan X, Kennedy AB. Attitudes, beliefs and behaviors of religiosity, spirituality, and cultural competence in the medical profession: A cross-sectional survey study. *PLoS One*. 2021;16(6 June):1–18.
  18. Rutherford C, Müller F, Faiz N, King MT, White K. Patient-reported outcomes and experiences from the perspective of colorectal cancer survivors: meta-synthesis of qualitative studies. *J Patient-Reported Outcomes*. 2020;4(1).
  19. Aritonang PY, Is F. UINSU Students' Understanding of Aurat and Shar'i Clothing in the Qur'an Surah An-Nur verse 31 and Surah Al-Ahzab verse 59. *QiST J Quran Tafseer Stud* [Internet]. 2025 Jun 24;4(1):367–86. Available from: <https://journals2.ums.ac.id/index.php/qist/article/view/10676>
  20. Ahmad HP. Thematic and Structural Unity of Q 79 (al-Nazi'at): An Intratextual and Intertextual Analysis. *QiST J Quran Tafseer Stud* [Internet]. 2025 Jan 6;4(1):41–58. Available from: <https://journals2.ums.ac.id/qist/article/view/6698>
  21. Rochmad R, Nasution A, Anggara DRA, Rifaannudin M, Almaarif MAHA. Water in the Parables of Worldly Life in the Qur'an: A Semantic and Scientific Study. *QiST J Quran Tafseer Stud* [Internet]. 2025 May 17;4(1):267–86. Available from: <https://journals2.ums.ac.id/index.php/qist/article/view/9053>
  22. Habibullah I, Zubaidi S, Chirzin M, Nasution A. The Integration of Knowledge in al-Tafsir al-'Ilmi in Improving the Interpretation Quality of Mutashabihat Verses: An Analysis of Zaghoul Muhammad Raghbi El-Naggar's Thought. *QiST J Quran Tafseer Stud* [Internet]. 2025 Mar 19;4(1):199–220. Available from: <https://journals2.ums.ac.id/index.php/qist/article/view/8732>
  23. Murtyaningsih R, Utaminingsih ES, Munawar M, Qomar MN, Ridwan MK. Optimizing STEAM-Based Differentiated Instruction to Enhance the Effectiveness of Surah At-Tin Memorization among Fourth-Grade Students at Elementary School. *QiST J Quran Tafseer Stud* [Internet]. 2025 May 23;4(1):307–24. Available from: <https://journals2.ums.ac.id/index.php/qist/article/view/10209>
  24. Aisyah S, Mahbub MI. Human Fingerprint Study from Zaqlul An-Najjar's Perspective with the STIFIn Method: Study of the Meaning of Banan in the Qur'an. *QiST J Quran Tafseer Stud* [Internet]. 2025 Feb 22;4(1):171–98. Available from: <https://journals2.ums.ac.id/index.php/qist/article/view/8440>
  25. Lumah DD, Nasrullah N, Salsabila BA, Almaliki F. How Did Imam At-Thabari's Interpretation with Tafsir bil Ma'tsur Style Influence Qur'anic Exegesis and Ulama During the Abbasid Dynasty Era? *QiST J Quran Tafseer Stud* [Internet]. 2025 Feb 6;4(1):151–70. Available from: <https://journals2.ums.ac.id/qist/article/view/7948>
  26. Shofaussamawati S, Nikmah A, Azkiya MA. Reading of Jasser Auda's System Theory in the Law Verse on Women and Mosques. *QiST J Quran Tafseer Stud* [Internet]. 2025 Jan 17;4(1):91–108. Available from: <https://journals2.ums.ac.id/qist/article/view/7954>
  27. Esa MSM, Yaacob SE, Wahid H. Establishing Shariah Audit Criteria for Zakat Operations: Where to Begin? *Bull Islam Res* [Internet]. 2025;3(4):777–96. Available from: <https://birjournal.com/index.php/bir/article/view/402>
  28. Mohieddin Masoud, Abdulnasir Alsayd, Majdy kasheem. Global Trends and Challenges in Teacher Training: A Bibliometric Analysis (2019–2024). *Bull Islam Res* [Internet]. 2025 Jun 8;3(4):705–32. Available from: <https://birjournal.com/index.php/bir/article/view/356>
  29. Yahaya A. Socio-Economic Impact of Some Muslim Non-Indigenes on the Development of Karmo Community in Abuja, Federal Capital Territory (FCT), Nigeria. *Bull Islam Res* [Internet]. 2025 May 29;3(4):651–70. Available from: <https://birjournal.com/index.php/bir/article/view/395>
  30. Nahid Ayad, Mowafg Abraham Masuwd, Safa Alrumayh. From Riba to Zakat: An Analytical Study of Islamic Economic Principles and Their Distinction from Conventional Economics. *Bull Islam Res* [Internet]. 2025 Jun 10;3(4):733–52. Available from: <https://birjournal.com/index.php/bir/article/view/358>
  31. Imam M. The Threats of Ai and Disinformation in Times of Global Crises. *Bull Islam Res* [Internet]. 2025 May 29;3(4):635–50. Available from: <https://birjournal.com/index.php/bir/article/view/394>

32. Hicham Diouane, Muhammad K. Ridwan, Muhammad Zawil Kiram, Abdalrahman Abulmajd. The Dynamics of Islamic Thought in Responding to Contemporary Challenges. *Bull Islam Res* [Internet]. 2025 Jun 5;3(4):671–86. Available from: <https://birjournal.com/index.php/bir/article/view/361>
33. Alhaji Bukar A, Mala Bukar W, Mustapha B. Exploring the Risks and Benefits of Speculative Business From Islamic Perspectives. *Bull Islam Res* [Internet]. 2026 Feb 20;4(1):25–46. Available from: <https://yayasanpendidikantafsirhadis.com/index.php/bir/article/view/410>
34. Hasan MS, Saky SATM, Islam MN. Islamization of Management Accounting and Business Decision-Making: A Literature Review. *Bull Islam Res* [Internet]. 2026 Mar 24;4(1):69–86. Available from: <https://yayasanpendidikantafsirhadis.com/index.php/bir/article/view/414>
35. Islam N. Interfaith Marriage in Bangladesh: A Theological and Sociological Study of Challenges, Barriers, and Backlash. *Bull Islam Res* [Internet]. 2026 Mar 24;4(1):47–68. Available from: <https://yayasanpendidikantafsirhadis.com/index.php/bir/article/view/413>
36. Ratshikana-Moloko M, Ayeni O, Tsitsi JM, Wong ML, Jacobson JS, Neugut AI, et al. Spiritual Care, Pain Reduction, and Preferred Place of Death Among Advanced Cancer Patients in Soweto, South Africa. *J Pain Symptom Manage*. 2020;60(1):37–47.
37. Derry HM, Epstein AS, Lichtenthal WG, Prigerson HG. Emotions in the room: common emotional reactions to discussions of poor prognosis and tools to address them. *Expert Rev Anticancer Ther*. 2019;19(8):689–96.
38. Leyva B, Allen JD, Ospino H, Tom LS, Negrón R, Buesa R, et al. Enhancing capacity among faith-based organizations to implement evidence-based cancer control programs: a community-engaged approach. *Transl Behav Med*. 2017;7(3):517–28.
39. Balboni TA, Prigerson HG, Balboni MJ, Enzinger AC, VanderWeele TJ, Maciejewski PK. A scale to assess religious beliefs in end-of-life medical care. *Cancer*. 2019;125(9):1527–35.
40. Higgins PC, Garrido MM, Prigerson HG. Factors Predicting Bereaved Caregiver Perception of Quality of Care in the Final Week of Life: Implications for Health Care Providers. *J Palliat Med*. 2015;18(10):849–57.
41. Smith AK, McCarthy EP, Paulk E, Balboni TA, Maciejewski PK, Block SD, et al. Racial and ethnic differences in advance care planning among patients with cancer: Impact of terminal illness acknowledgment, religiousness, and treatment preferences. *J Clin Oncol*. 2008;26(25):4131–7.
42. Nadwi HMAR. Nadwatul Ulama and Its Role in Defending Islamic Thought Against Colonial and Secular Influences. *Bull Islam Res* [Internet]. 2025 May 24;3(4):615–34. Available from: <https://birjournal.com/index.php/bir/article/view/374>
43. Mugoya Bashir, Ndizaawa Joash Paul, Akurut Patricia Ocom, Bolatito AOS. The Influence of Islamic Culture on Organizational Performance in Islamic University In Uganda: A descriptive Study. *Bull Islam Res* [Internet]. 2025 May 18;3(4):595–614. Available from: <https://birjournal.com/index.php/bir/article/view/373>
44. Haryanti Y. The Urgency of Wills in Preventing Inheritance Disputes from the Perspective of Civil Law and Islamic Law. *Bull Islam Res* [Internet]. 2026 Mar 26;4(1):87–102. Available from: <https://yayasanpendidikantafsirhadis.com/index.php/bir/article/view/409>
45. Ali MA, Aamir N, Jamil AA. Prophetic Change Management and Strategic Failure: A Qur'anic Framework from Surah Ash-Shu 'arā.' *Bull Islam Res*. 2026;4(1):1–24.
46. PC-FACS November 2023. *J Pain Symptom Manage*. 2024;67(1):98–104.
47. Best M, McArdle MB, Huang YJ, Clayton J, Butow P. How and how much is spirituality discussed in palliative care consultations for advanced cancer patients with and without a question prompt list? *Patient Educ Couns*. 2019;102(12):2208–13.
48. Mohamadifard Z, Fathi-Ashtian A, HajiFathali A, Nasrollahi B, Ahmadi F. Survival protection of patients undergoing hematopoietic stem cell transplantation: grounded theory. *Support Care Cancer*. 2023;31(7).
49. Alkali Kolo Y, Amuda BG. Guidance and Counselling: Its Impact and Services in Tertiary Institutions in Borno State, Nigeria. *Bull Islam Res* [Internet]. 2025 Dec 19;3(4):817–32. Available from: <https://yayasanpendidikantafsirhadis.com/index.php/bir/article/view/405>
50. Garssen B, Uwland-Sikkema NF, Visser A. How Spirituality Helps Cancer Patients with the Adjustment to their Disease. *J Relig Health*. 2015;54(4):1249–65.
51. Bernard A. February PC-FACS. *J Pain Symptom Manage*. 2022;63(4):627–33.
52. Samah FH, Ghani NARNA. Contemporary Interpretation of Asnaf Muallaf and Its Management Model: Evidence from Majlis Islam Sarawak. *Bull Islam Res* [Internet]. 2025;3(4):753–76. Available from: <https://birjournal.com/index.php/bir/article/view/401>
53. Sule MM, Aliyu MM. Selected Chapters of Bayan Wujub Al-Hijraala'l-Ibad of Shaykh Uthman Bn Fuduye, its Impact and Teachings to the Lives of

- Contemporary Muslim Ummah. *Bull Islam Res* [Internet]. 2025;3(4):797–816. Available from: <https://birjournal.com/index.php/bir/article/view/403>
54. Kim Y, Shaffer KM, Carver CS, Cannady RS. Quality of life of family caregivers 8 years after a relative's cancer diagnosis: Follow-up of the National Quality of Life Survey for Caregivers. *Psychooncology*. 2016;25(3):266–74.
55. Johnson MW, Hendricks PS, Barrett FS, Griffiths RR. Classic psychedelics: An integrative review of epidemiology, therapeutics, mystical experience, and brain network function. *Pharmacol Ther*. 2019;197:83–102.
56. Widodo M, Zakaria A. Equality and Complementarity in the Qur'an: A Thematic Exegesis of Gender Relations. *QiST J Quran Tafseer Stud* [Internet]. 2026 Apr 2;5(2):497–516. Available from: <https://journals2.ums.ac.id/qist/article/view/15375>
57. Alhaj AAM. Measuring Connotative Meaning in English Translations of the Holy Qur'an: A Semantic and Applied Analysis. *QiST J Quran Tafseer Stud* [Internet]. 2026 Mar 31;5(2):413–36. Available from: <https://journals2.ums.ac.id/qist/article/view/16107>
58. Asnawi AR, Supandi MD, Farabi FA Al. The Qur'an and Mathematics: The Dimension of Tawhid and Knowledge in the Perspective of Afzalur Rahman. *QiST J Quran Tafseer Stud* [Internet]. 2026 Apr 2;5(2):477–96. Available from: <https://journals2.ums.ac.id/qist/article/view/13865>
59. Aidil A, Arifudin I, Hani U, Fauziyah N. Can the Educational Values of QS. Luqman 13-19 Be Contextualized for Career Families? *QiST J Quran Tafseer Stud* [Internet]. 2026 Mar 31;5(2):459–76. Available from: <https://journals2.ums.ac.id/qist/article/view/15319>
60. Robikah S, Royyani I, Ridwan MK. Gendered Moral Agency and Qur'anic Hermeneutics of Sexuality: A Ma'na-cum-Maghza Reading on the Story of Yusuf and Zulaykha. *QiST J Quran Tafseer Stud* [Internet]. 2026 Mar 31;5(2):437–58. Available from: <https://journals2.ums.ac.id/qist/article/view/14409>