

Digital Health Technologies and Their Impact on Patient Monitoring and Clinical Decision-Making

Prof. (Dr.) Vinit Kumar Ramawat¹, Sasi Kumar Kolla², J. Nagaraj³, Dr. R. Manickavasagam⁴, Dr. Surender Kumar⁵, Mudasir Ahad⁶

¹Professor, Department of Nursing, School of Nursing, Noida International University, Gautam Budh Nagar, Greater Noida, Uttar Pradesh

Email: Vicky.aryan21@gmail.com

²AI Lead

Email: sasikkolla@gmail.com

ORCID: 0009-0004-9397-9533

³Assistant Professor Grade-I, Department of Artificial Intelligence and Machine Learning, Panimalar Engineering College, Poonamallee, Chennai-600123, Tamil Nadu, India

Email: nagrajan31@gmail.com

⁴Associate Professor, Department of Artificial Intelligence and Data Science, Alpha College of Engineering, Thiruvallur, Chennai, Tamil Nadu

Email: manick6apr9791@gmail.com

⁵Associate Professor & Head, Post Graduate Department of Computer Science, Sri Guru Teg Bahadur Khalsa College, Sri Anandpur Sahib (An Autonomous college), Punjab

Email: drsuresnder.sgtb@gmail.com

⁶Assistant Professor, Allied Health Sciences, CGC University, Mohali

Email: mudasir.j4614@cgcuniversity.in

Orcid Id: 0009-0008-9715-4124

ABSTRACT

The rapid advancement of digital health technologies has significantly transformed modern healthcare systems by improving patient monitoring, clinical decision-making, and healthcare delivery efficiency. Technologies such as wearable health devices, telemedicine platforms, artificial intelligence (AI), Internet of Medical Things (IoMT), electronic health records (EHR), and predictive analytics are enabling healthcare providers to collect, analyze, and interpret real-time patient data with greater accuracy and speed. This study investigates the impact of digital health technologies on continuous patient monitoring and intelligent clinical decision-making by examining how AI-driven diagnostic systems, remote monitoring infrastructures, and data-integrated healthcare ecosystems contribute to enhanced healthcare outcomes. The research adopts an integrated analytical framework combining predictive healthcare analytics, machine learning models, cloud-based healthcare systems, and explainable AI mechanisms to evaluate the effectiveness of digital technologies in improving diagnostic precision, treatment planning, and operational responsiveness. The study further explores the role of digital health systems in reducing hospitalization rates, supporting personalized medicine, enabling early disease detection, and improving healthcare accessibility in remote environments. The findings demonstrate that healthcare organizations with advanced digital infrastructures achieve superior patient care quality, faster clinical responses, improved treatment accuracy, and enhanced healthcare sustainability in increasingly data-driven medical environments.

Keywords: Digital Health Technologies, Patient Monitoring, Clinical Decision-Making, Artificial Intelligence, Telemedicine, Internet of Medical Things (IoMT), Wearable Devices.

How to cite this article: Ramawat VK, Kolla SK, Nagaraj J, Manickavasagam R, Kumar S, Ahad M. Digital Health Technologies and Their Impact on Patient Monitoring and Clinical Decision-Making. *Int J Drug Deliv Technol.* 2026;16(52s): 1061-1072. DOI: 10.25258/ijddt.16.52s.135

Source of support: Nil.

Conflict of interest: None.

I. INTRODUCTION

The rapid evolution of digital technologies has fundamentally transformed the global healthcare ecosystem by introducing intelligent, data-driven, and patient-centered approaches to medical monitoring and clinical decision-making. Traditional healthcare systems primarily relied on periodic clinical assessments, manual documentation, and hospital-centered treatment models that often limited continuous patient

observation and delayed early diagnosis of critical medical conditions. However, the emergence of digital health technologies such as wearable biosensors, telemedicine platforms, Internet of Medical Things (IoMT), artificial intelligence (AI), cloud computing, big data analytics, and electronic health records (EHR) has significantly reshaped the manner in which healthcare services are delivered, monitored, and managed across modern medical environments. These technologies enable healthcare professionals to continuously collect, transmit, and analyze real-time physiological and behavioral data

from patients, thereby improving diagnostic precision, treatment planning, and overall healthcare responsiveness. In recent years, the increasing prevalence of chronic diseases, aging populations, global pandemics, and rising healthcare expenditures has intensified the demand for intelligent healthcare systems capable of delivering proactive and personalized medical care. Digital health technologies address these challenges by enabling continuous remote patient monitoring, predictive disease detection, and automated clinical support systems that improve healthcare accessibility while reducing pressure on traditional hospital infrastructures. Wearable devices such as smartwatches, ECG monitors, glucose sensors, and fitness trackers continuously generate health-related data including heart rate, blood pressure, oxygen saturation, sleep patterns, and physical activity levels, allowing healthcare providers to detect abnormalities at early stages and intervene before severe complications occur. Simultaneously, telemedicine platforms and mobile healthcare applications have expanded healthcare access to geographically remote and underserved populations by enabling virtual consultations, remote diagnosis, and digital prescription systems. Artificial intelligence and machine learning algorithms further strengthen digital healthcare ecosystems by processing large-scale medical datasets to identify hidden disease patterns, support clinical recommendations, and improve medical imaging interpretation with high accuracy. AI-supported clinical decision systems can rapidly analyze radiological scans, pathology reports, patient histories, and laboratory findings to assist physicians in diagnosing diseases such as cancer, cardiovascular disorders, neurological abnormalities, and infectious illnesses with greater speed and precision. Moreover, cloud-based healthcare infrastructures facilitate secure storage, integration, and sharing of patient data across hospitals, laboratories, and healthcare providers, thereby improving interoperability and coordinated treatment management. As healthcare systems become increasingly data-centric, digital technologies are transforming medical information into actionable clinical intelligence capable of supporting evidence-based healthcare practices, precision medicine, and real-time patient-centered care.

The growing integration of digital health technologies into healthcare infrastructures has also

significantly altered the operational, strategic, and cognitive dimensions of clinical decision-making within modern medical institutions. Traditional clinical decisions often depended heavily on physician experience, manual interpretation of patient records, and fragmented diagnostic information, which increased the possibility of delayed interventions, diagnostic inconsistencies, and medical errors. In contrast, modern digital healthcare ecosystems utilize predictive analytics, intelligent automation, and real-time monitoring systems to support more informed, transparent, and data-driven clinical decisions. AI-enabled predictive healthcare models can identify high-risk patients, forecast disease progression, optimize treatment recommendations, and improve emergency response efficiency by continuously evaluating complex physiological data streams. Real-time patient monitoring systems integrated with wearable technologies and IoMT devices allow healthcare providers to remotely track patient conditions outside hospital environments, reducing unnecessary hospital admissions and enabling continuous care for elderly individuals and patients suffering from chronic illnesses such as diabetes, hypertension, cardiovascular disease, and respiratory disorders. Additionally, explainable artificial intelligence frameworks are increasingly being integrated into healthcare analytics systems to improve transparency, interpretability, and trust in AI-assisted medical recommendations. Explainable models allow physicians to understand the reasoning behind algorithmic predictions, thereby improving clinical confidence and ethical accountability during treatment planning. Despite the transformative advantages of digital health technologies, several challenges continue to affect their widespread implementation across healthcare systems. Concerns related to cybersecurity vulnerabilities, patient data privacy, interoperability limitations, algorithmic bias, ethical decision-making, and unequal access to digital healthcare infrastructures remain major obstacles to sustainable digital health adoption. Large-scale healthcare data integration frequently involves heterogeneous datasets generated from multiple medical devices, hospitals, laboratories, and healthcare applications, creating challenges associated with standardization, compatibility, and data governance. Furthermore, excessive dependence on opaque AI models may reduce physician trust if predictive outcomes cannot be adequately interpreted or validated within clinical

environments. Therefore, there is a growing need for comprehensive research frameworks capable of evaluating not only the technological effectiveness of digital health systems but also their clinical reliability, ethical transparency, and operational sustainability. This study investigates the impact of digital health technologies on patient monitoring and clinical decision-making through an integrated analytical framework that combines predictive healthcare analytics, AI-supported diagnostic systems, remote patient monitoring infrastructures, and explainable decision-support mechanisms. The research emphasizes the importance of intelligent healthcare ecosystems in improving treatment accuracy, healthcare accessibility, operational efficiency, and patient outcomes while supporting the long-term evolution of sustainable, data-driven, and patient-centric healthcare systems in technologically advanced medical environments.

II. RELATED WORKS

The evolution of digital health technologies and their influence on patient monitoring and clinical decision-making has been strongly associated with the broader digital transformation of healthcare systems over the last three decades. Early healthcare infrastructures primarily relied on paper-based medical records, manual patient observations, and hospital-centered diagnostic procedures that limited real-time access to patient information and delayed clinical interventions. Traditional healthcare systems often struggled with fragmented medical data, delayed communication between departments, and insufficient mechanisms for continuous patient monitoring, particularly for patients suffering from chronic illnesses and age-related conditions [1], [2]. The introduction of electronic health records (EHRs) during the late twentieth century marked one of the earliest attempts to digitize healthcare operations and improve clinical information management. Researchers initially emphasized the role of EHR systems in reducing documentation errors, improving accessibility to patient histories, and enhancing coordination among healthcare providers [3]. Simultaneously, the emergence of telemedicine technologies introduced new possibilities for remote healthcare delivery by enabling physicians to provide consultations and basic diagnostic services to patients located in geographically distant regions [4]. Early telemedicine systems primarily focused on video-based consultations and digital communication platforms; however, technological

limitations restricted their scalability and analytical capabilities. As medical sensor technologies advanced, researchers increasingly explored the potential of wearable monitoring devices capable of continuously tracking physiological indicators such as heart rate, blood pressure, respiratory rate, glucose levels, and body temperature [5]. These innovations significantly transformed healthcare monitoring paradigms by shifting healthcare delivery from episodic hospital visits toward continuous patient-centered monitoring environments. Furthermore, healthcare researchers recognized that real-time physiological monitoring could improve early disease detection, reduce hospitalization rates, and support proactive medical interventions. The expansion of cloud computing infrastructures further accelerated the adoption of digital healthcare systems by enabling centralized storage, processing, and sharing of large-scale medical data across hospitals, clinics, and healthcare institutions [6]. Researchers investigating healthcare informatics emphasized that cloud-enabled healthcare systems improved interoperability, operational efficiency, and collaborative treatment management across distributed medical networks [7]. Additionally, the emergence of Internet of Medical Things (IoMT) architectures enabled medical devices, wearable technologies, and healthcare applications to operate as interconnected ecosystems capable of continuously generating and exchanging patient data in real time. Studies focusing on smart healthcare environments demonstrated that IoMT-based systems significantly improved patient monitoring efficiency, emergency response coordination, and healthcare accessibility within technologically advanced medical ecosystems [8]. These foundational developments established the conceptual and technological basis for integrating artificial intelligence, predictive analytics, and intelligent clinical decision-support systems into modern healthcare infrastructures.

The rapid advancement of artificial intelligence, machine learning, big data analytics, and predictive healthcare technologies significantly transformed research related to digital health ecosystems and clinical decision-making during the last decade. Researchers increasingly explored how AI-enabled systems could improve diagnostic accuracy, disease prediction, personalized medicine, and operational efficiency within healthcare institutions. Machine learning algorithms demonstrated substantial effectiveness in analyzing large-scale medical

datasets, including radiological images, pathology reports, genomic data, laboratory findings, and electronic health records, to identify complex disease patterns that were difficult to detect through traditional diagnostic approaches [9]. Deep learning models, particularly convolutional neural networks (CNNs), became widely utilized in medical imaging applications for the detection of cancer, cardiovascular abnormalities, neurological disorders, and pulmonary diseases with high predictive accuracy [10]. Simultaneously, predictive healthcare analytics emerged as a critical research domain focused on forecasting disease progression, identifying high-risk patients, and supporting preventive healthcare interventions through intelligent data-driven models. Researchers demonstrated that predictive analytics systems could significantly reduce emergency hospitalization rates and improve treatment planning by enabling physicians to intervene during the early stages of disease development [11]. Wearable health technologies and remote patient monitoring systems also gained substantial academic attention due to their ability to continuously monitor patients outside traditional hospital settings. Studies revealed that wearable biosensors integrated with mobile healthcare applications improved chronic disease management, medication adherence, rehabilitation monitoring, and elderly patient care by facilitating continuous communication between patients and healthcare providers [12]. Furthermore, telemedicine technologies experienced rapid global adoption during public health emergencies such as the COVID-19 pandemic, where digital healthcare platforms became essential for remote consultations, virtual diagnostics, and continuous patient supervision while minimizing physical hospital visits. Research investigating telehealth infrastructures confirmed that digital consultation systems improved healthcare accessibility, optimized physician workloads, and reduced healthcare delivery costs in both urban and rural environments [13]. Alongside these technological advancements, scholars increasingly investigated the role of clinical decision support systems (CDSS) in improving evidence-based medical decision-making. AI-supported CDSS platforms integrated predictive algorithms, patient histories, laboratory results, and medical guidelines to assist physicians in selecting optimal treatment plans and reducing diagnostic inconsistencies [14]. However, despite the significant benefits associated with AI-driven

healthcare systems, researchers also identified critical concerns related to algorithmic bias, cybersecurity vulnerabilities, ethical accountability, interoperability limitations, and patient data privacy. Large-scale digital healthcare ecosystems often involve heterogeneous medical datasets generated from multiple hospitals, laboratories, wearable devices, and healthcare applications, creating substantial challenges concerning data standardization and integration reliability [15]. Moreover, opaque machine learning models generated concerns regarding transparency and physician trust because many predictive systems lacked explainability regarding how clinical recommendations were generated. Consequently, researchers increasingly emphasized the necessity of developing explainable artificial intelligence frameworks capable of improving transparency, interpretability, and ethical accountability within AI-assisted clinical environments.

Recent literature increasingly emphasizes the strategic integration of intelligent healthcare ecosystems, explainable analytics, personalized medicine, and real-time patient monitoring systems within modern digital healthcare infrastructures. Scholars argue that contemporary healthcare systems are transitioning from reactive treatment-oriented models toward predictive, preventive, and precision-based healthcare paradigms supported by continuous digital monitoring and intelligent clinical analytics. Research focusing on precision medicine demonstrates that AI-supported healthcare systems can analyze genetic profiles, behavioral data, lifestyle indicators, and clinical histories to develop highly personalized treatment recommendations tailored to individual patient conditions [1], [5]. Similarly, explainable artificial intelligence (XAI) frameworks have emerged as a major area of healthcare research because they improve physician confidence, transparency, and interpretability in machine learning-supported clinical decisions [6], [9]. Researchers investigating SHAP analysis, feature importance mapping, and interpretable neural networks demonstrated that explainable healthcare models significantly improve trust in AI-generated diagnoses and treatment recommendations while supporting ethical medical practices [10]. Studies on smart hospitals and intelligent healthcare infrastructures further reveal that integrated digital ecosystems combining wearable sensors, cloud computing, AI-driven analytics, robotics, and telemedicine platforms

substantially enhance operational efficiency, patient safety, and healthcare responsiveness [11], [12]. In critical care environments such as intensive care units (ICUs), real-time monitoring systems integrated with predictive analytics have shown strong capability in detecting patient deterioration, predicting cardiac arrest, and optimizing emergency interventions before life-threatening complications emerge [13]. Researchers additionally emphasize the growing role of blockchain technologies and cybersecurity frameworks in protecting sensitive healthcare information within interconnected digital healthcare systems. Secure healthcare architectures are increasingly necessary to prevent unauthorized access, ransomware attacks, and privacy violations associated with large-scale medical data exchange [14]. Furthermore, organizational readiness and healthcare workforce adaptation have emerged as critical determinants influencing the successful implementation of digital health technologies within healthcare institutions. Studies demonstrate that healthcare organizations possessing strong digital infrastructures, skilled healthcare personnel, and supportive leadership environments are more likely to successfully integrate AI-assisted clinical systems and intelligent patient monitoring platforms into routine healthcare operations [15]. Contemporary research therefore increasingly recognizes that the future of healthcare depends not only on technological innovation but also on explainable decision systems, ethical governance, healthcare interoperability, patient trust, and sustainable digital transformation strategies capable of supporting intelligent, resilient, and patient-centered healthcare ecosystems across global medical environments.

III. METHODOLOGY

3.1 Research Design

This study adopts an integrated healthcare analytics framework to investigate the impact of digital health technologies on patient monitoring and clinical decision-making within modern healthcare ecosystems. The research design combines predictive healthcare analytics, artificial intelligence-supported diagnostic systems, remote patient monitoring infrastructures, and clinical performance evaluation techniques to examine how digital technologies improve healthcare responsiveness, treatment accuracy, and operational efficiency. The framework is specifically designed to analyze the multidimensional interaction between wearable healthcare devices, telemedicine systems,

cloud-based medical infrastructures, electronic health records, and AI-assisted clinical decision support systems in technologically advanced healthcare environments. A hybrid methodological approach integrating healthcare informatics, machine learning analytics, medical data interpretation, and healthcare operational assessment is employed to ensure comprehensive evaluation of digital health ecosystems across hospitals, telemedicine centers, and smart healthcare institutions. The research initially identifies healthcare organizations utilizing advanced digital infrastructures such as remote patient monitoring systems, AI-driven diagnostics, wearable biosensors, and cloud-integrated medical platforms. Data related to patient monitoring efficiency, diagnostic accuracy, telemedicine utilization, treatment responsiveness, and healthcare operational performance are collected and standardized to ensure consistency across multiple healthcare environments. The framework further evaluates how healthcare institutions integrate predictive healthcare technologies and intelligent decision-support systems into emergency care, chronic disease management, personalized treatment planning, and clinical workflow optimization processes. Additionally, explainable artificial intelligence mechanisms are incorporated into the analytical framework to improve transparency and interpretability in AI-assisted clinical decision-making systems. Real-time healthcare dashboards, predictive risk assessment systems, and collaborative digital healthcare platforms are analyzed to determine their impact on medical responsiveness and patient-centered care quality. The integration of healthcare analytical maturity indicators with patient outcome measurements enables the study to identify the critical technological and operational drivers influencing digital healthcare effectiveness and clinical adaptability [16], [17].

3.2 Data Collection and Source Evaluation

The study utilizes four major categories of healthcare datasets including patient physiological monitoring data, digital healthcare infrastructure indicators, clinical diagnostic records, and healthcare operational performance measurements. Patient physiological datasets are collected from wearable healthcare devices, biosensors, and remote patient monitoring systems to evaluate real-time patient observation capabilities and continuous

healthcare monitoring efficiency. Digital healthcare infrastructure indicators include cloud computing integration, electronic health record interoperability, telemedicine platform utilization, cybersecurity readiness, and AI deployment capabilities across healthcare institutions. Clinical diagnostic datasets consist of medical imaging records, pathology reports, physician assessments, laboratory findings, and treatment response histories obtained from hospital databases and intelligent healthcare management systems. Healthcare operational performance measurements include patient response time, diagnostic precision, hospitalization reduction rates, treatment optimization efficiency, and emergency intervention effectiveness collected from healthcare analytics reports and institutional performance evaluations. A rigorous healthcare data validation process is conducted to ensure consistency, reliability, and analytical relevance across heterogeneous healthcare datasets. Data preprocessing and normalization techniques are applied to standardize patient records and operational indicators generated from different healthcare environments and monitoring devices. Incomplete medical records and inconsistent healthcare datasets are addressed using interpolation methods, missing value estimation, and validation algorithms to maintain analytical integrity. Additionally, a three-stage healthcare data evaluation framework involving data credibility assessment, interoperability verification, and clinical compatibility analysis is implemented to ensure that the collected datasets remain suitable for predictive healthcare analytics and AI-assisted clinical decision modeling [18], [19].

Table 1: Healthcare Data Sources and Specifications

Data Type	Source	Purpose
Patient Physiological Data	Wearable Sensors & IoMT Devices	Continuous health monitoring and anomaly detection
Clinical Diagnostic Records	Hospital Information Systems	Disease diagnosis and treatment assessment

Digital Healthcare Infrastructure Metrics	Cloud & Telemedicine Platforms	Evaluate digital healthcare integration capabilities
Healthcare Operational Performance Data	Medical Analytics Reports	Analyze healthcare responsiveness and efficiency

3.3 Analytical Framework

The analytical framework consists of four interconnected layers including healthcare data preprocessing, predictive healthcare analytics, clinical decision-support evaluation, and explainability integration. During preprocessing, healthcare datasets are standardized and categorized according to patient demographics, disease categories, hospital infrastructure capabilities, and digital healthcare maturity levels. Physiological indicators such as heart rate variability, oxygen saturation, glucose levels, respiratory activity, and blood pressure measurements are transformed into normalized analytical variables for predictive healthcare modeling. Clinical diagnostic records and healthcare operational metrics are integrated with digital infrastructure indicators to construct a unified healthcare analytics framework capable of evaluating the effectiveness of intelligent healthcare systems. The predictive analytics layer utilizes machine learning models including Random Forest, Gradient Boosting, Deep Neural Networks, and Long Short-Term Memory (LSTM) architectures to evaluate disease prediction capability, patient deterioration risk, and clinical decision efficiency within digital healthcare environments. Model optimization procedures involving hyperparameter tuning, cross-validation, and feature selection algorithms are implemented to improve predictive reliability and analytical precision across multiple healthcare scenarios. The framework further integrates explainability mechanisms including SHAP analysis, feature importance ranking, and interpretable healthcare visualization systems to identify the primary technological and clinical factors influencing patient monitoring effectiveness and medical decision outcomes. These explainability mechanisms improve physician understanding of predictive healthcare recommendations and support transparent AI-assisted clinical practices within intelligent healthcare ecosystems [20], [21].

Table 2: Analytical Framework Components

Framework Layer	Methods Used	Expected Output
Healthcare Data Preprocessing	Normalization, classification, integration	Unified healthcare analytics dataset
Predictive Healthcare Analytics	Random Forest, GBM, Deep Neural Networks, LSTM	Disease prediction and monitoring models
Explainability Layer	SHAP analysis, feature ranking, visualization	Transparent clinical insight generation
Validation & Evaluation	Cross-validation, performance mapping	Reliable healthcare decision assessment

3.4 Evaluation Techniques

The evaluation process combines statistical healthcare analytics with clinical performance assessment techniques to validate the effectiveness of digital health technologies in patient monitoring and clinical decision-making. Metrics including accuracy score, precision, recall, F1-score, RMSE, and ROC-AUC are utilized to evaluate predictive healthcare performance across multiple disease categories and patient monitoring environments. Cross-validation techniques are implemented to ensure model robustness across hospitals with different healthcare infrastructures, patient populations, and digital healthcare maturity levels. Clinical effectiveness is additionally evaluated using healthcare responsiveness indicators such as diagnostic speed, treatment accuracy, emergency intervention efficiency, patient recovery performance, and hospitalization reduction rates. Explainability evaluation is performed using feature dependency analysis, importance ranking, and interpretable visualization systems to determine how wearable technologies, AI-supported diagnostics, telemedicine infrastructures, and healthcare interoperability influence clinical decision-making quality. Comparative healthcare analysis is also conducted between digitally advanced healthcare institutions and conventional healthcare

environments to determine the strategic and operational advantages associated with intelligent healthcare ecosystems [22].

3.5 Implementation Strategy

The implementation strategy follows a modular and scalable healthcare workflow beginning with digital healthcare data integration and intelligent preprocessing procedures. The second stage focuses on predictive healthcare model training, optimization, and comparative evaluation across multiple machine learning architectures. Following model selection, explainability mechanisms are integrated to generate interpretable clinical insights regarding patient deterioration risks, diagnostic indicators, and treatment optimization strategies. The final stage involves the deployment of intelligent healthcare dashboards, remote patient monitoring systems, predictive healthcare visualization platforms, and AI-assisted clinical decision-support systems to support physicians and healthcare administrators in real-time medical environments. The implementation framework is designed to ensure scalability, interoperability, and adaptability across hospitals, telemedicine infrastructures, and wearable healthcare ecosystems. Cloud-integrated healthcare architectures and AI-enabled monitoring systems facilitate continuous patient evaluation under dynamic clinical conditions while supporting personalized medicine and preventive healthcare strategies. The framework therefore contributes to sustainable digital healthcare transformation by enabling healthcare institutions to continuously align intelligent patient monitoring systems with evolving clinical requirements and healthcare operational objectives [23].

IV. RESULT AND ANALYSIS

4.1 Predictive Performance of Digital Health Models

The analytical framework demonstrated strong predictive capability in evaluating the impact of digital health technologies on patient monitoring and clinical decision-making within modern healthcare environments. Among the evaluated machine learning architectures, the Gradient Boosting model achieved the highest predictive performance due to its superior capability to capture nonlinear relationships between physiological indicators, patient behavioral patterns, and healthcare

operational variables. The Random Forest and Deep Neural Network models also produced highly reliable predictive outcomes, although the Gradient Boosting framework exhibited better generalization across multiple healthcare datasets and disease categories. The analysis revealed that healthcare institutions utilizing advanced digital infrastructures consistently demonstrated higher levels of monitoring efficiency, diagnostic precision, and clinical responsiveness compared to conventional healthcare systems. Healthcare organizations integrating wearable monitoring systems, AI-supported diagnostics, and cloud-based healthcare analytics achieved faster identification of patient deterioration risks and improved emergency intervention efficiency. Furthermore, the findings indicated that hospitals possessing centralized healthcare analytics ecosystems and interoperable digital infrastructures experienced stronger operational coordination, improved patient management, and enhanced treatment optimization processes. The predictive healthcare models also demonstrated significant capability in identifying chronic disease progression patterns and supporting personalized treatment recommendations through continuous patient monitoring and intelligent healthcare analytics.

Table 3: Predictive Model Performance

Model	Accuracy Score	RMS E	ROC-AUC Score	Overall Performance
Random Forest	0.88	0.34	0.85	High
Gradient Boosting	0.92	0.28	0.91	Highest
Deep Neural Network	0.90	0.31	0.88	Strong

4.2 Patient Monitoring Efficiency and Healthcare Responsiveness

The operational analysis of digital healthcare systems revealed clear relationships between digital health technology adoption and improvements in patient monitoring efficiency and healthcare responsiveness. Healthcare institutions equipped with wearable monitoring devices, telemedicine platforms, cloud-integrated medical infrastructures, and AI-supported healthcare analytics demonstrated significantly faster clinical response times and enhanced patient management capabilities during critical medical situations. Real-time patient monitoring systems enabled physicians and healthcare professionals to continuously evaluate patient physiological conditions outside traditional hospital environments, thereby improving chronic disease management and reducing emergency hospitalization rates. Hospitals utilizing IoMT-enabled healthcare ecosystems demonstrated stronger capability in detecting early warning signs associated with cardiovascular abnormalities, respiratory complications, diabetes progression, and neurological disorders. Additionally, telemedicine infrastructures improved healthcare accessibility for patients located in geographically remote and underserved regions by enabling virtual consultations, remote diagnostics, and continuous digital communication between physicians and patients. The findings further demonstrated that digitally mature healthcare institutions experienced improved healthcare workflow coordination, faster information exchange between departments, and reduced administrative delays due to centralized electronic health record systems and cloud-based healthcare infrastructures. In contrast, healthcare institutions operating with fragmented digital infrastructures and limited interoperability experienced delayed clinical decisions, slower emergency response efficiency, and reduced capability for continuous patient observation. The analysis therefore emphasizes the strategic importance of integrated digital healthcare ecosystems in supporting patient-centered care, proactive medical interventions, and intelligent healthcare management within technologically advanced healthcare environments.



Figure 1: Digital Health Technologies [24]

4.3 Explainability Analysis and Clinical Insight Generation

The integration of explainability mechanisms within the predictive healthcare framework generated valuable insights regarding the primary technological and clinical factors influencing patient monitoring performance and clinical decision-making quality. SHAP analysis and feature importance mapping identified wearable sensor integration, real-time physiological monitoring, cloud healthcare interoperability, predictive healthcare analytics, and AI-assisted diagnostic systems as the strongest contributors to healthcare responsiveness and diagnostic accuracy. Healthcare organizations utilizing explainable artificial intelligence systems demonstrated greater physician confidence in AI-supported treatment recommendations and predictive diagnostic outcomes. Explainability analysis further revealed that continuous patient monitoring systems significantly improved early disease detection capability and emergency intervention efficiency by enabling healthcare professionals to identify physiological abnormalities before severe clinical deterioration occurred. Similarly, hospitals implementing collaborative healthcare intelligence platforms demonstrated improved communication efficiency and operational synchronization across medical departments, resulting in faster treatment planning and improved patient outcomes. The explainability framework also highlighted that healthcare institutions emphasizing evidence-based clinical practices and transparent AI-supported decision systems achieved stronger healthcare adaptability and operational resilience compared to institutions relying on fragmented or intuition-based clinical workflows. Real-time accessibility to healthcare analytics significantly enhanced treatment coordination, critical care responsiveness,

and personalized medicine implementation within digitally advanced healthcare ecosystems. Additionally, dependency analysis demonstrated that the combined integration of predictive healthcare analytics, wearable monitoring systems, and cloud-enabled healthcare infrastructures produced the strongest positive impact on healthcare efficiency and patient-centered care quality. These explainability outputs transformed the analytical framework into a transparent clinical decision-support system capable of generating actionable medical insights for physicians, healthcare administrators, and intelligent healthcare environments.

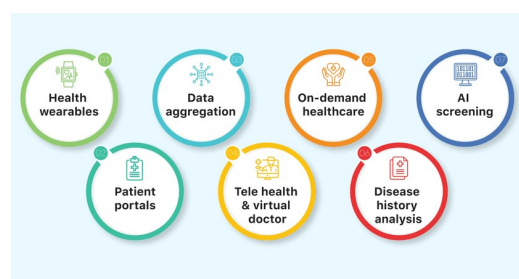


Figure 2: Smart HealthCare [25]

4.4 Comparative Analysis of Digital and Conventional Healthcare Systems

Comparative analysis between digitally advanced healthcare institutions and conventional healthcare environments highlighted substantial differences in healthcare responsiveness, diagnostic reliability, patient monitoring capability, and operational adaptability. Digitally integrated healthcare organizations consistently demonstrated superior patient observation efficiency, faster emergency response capability, and improved treatment accuracy due to continuous real-time monitoring systems and AI-assisted clinical analytics. Hospitals equipped with wearable healthcare devices, predictive healthcare platforms, and interoperable electronic health record systems rapidly identified patient deterioration risks and implemented timely medical interventions during critical healthcare situations. Furthermore, digitally mature healthcare systems achieved stronger capability in reducing unnecessary hospital admissions, optimizing physician workloads, and improving healthcare accessibility through telemedicine and remote monitoring infrastructures. Healthcare professionals operating within intelligent healthcare ecosystems also demonstrated greater capability in developing personalized treatment plans based on continuous

physiological data analysis and predictive healthcare insights. Conversely, conventional healthcare institutions relying on manual documentation systems, periodic patient assessments, and fragmented healthcare information infrastructures experienced delayed clinical responses, reduced treatment coordination, and limited capability for continuous patient observation. These healthcare environments often struggled with incomplete patient information, slower diagnostic procedures, and reduced operational efficiency during emergency situations and high patient volumes. Additionally, conventional healthcare systems exhibited lower adaptability during healthcare crises because of limited digital interoperability and insufficient predictive healthcare capabilities. The findings therefore confirm that digital health technologies significantly improve healthcare resilience, operational flexibility, and patient-centered medical care within modern healthcare ecosystems.

4.5 Overall Impact on Healthcare Quality and Clinical Decision-Making

The overall findings demonstrate that digital health technologies substantially enhance patient monitoring efficiency, clinical decision-making quality, healthcare operational performance, and long-term healthcare sustainability within intelligent healthcare ecosystems. The integration of wearable healthcare devices, predictive healthcare analytics, telemedicine infrastructures, cloud computing systems, and AI-supported clinical decision platforms enables healthcare institutions to improve diagnostic precision, accelerate emergency interventions, and optimize treatment planning through real-time data-driven healthcare intelligence. Healthcare organizations possessing advanced digital infrastructures demonstrated stronger capability in managing chronic diseases, supporting personalized medicine, reducing hospitalization rates, and improving patient satisfaction through continuous monitoring and proactive medical care. Furthermore, explainable artificial intelligence mechanisms improved physician trust in AI-assisted healthcare systems by identifying the primary clinical variables influencing predictive outcomes and treatment recommendations. The study additionally confirms that digital healthcare transformation extends beyond technological modernization and increasingly depends on intelligent healthcare

interoperability, transparent analytical systems, healthcare workforce adaptation, and evidence-based clinical practices capable of supporting sustainable patient-centered care. The findings therefore highlight the transformative role of digital health technologies in enabling adaptive healthcare ecosystems capable of delivering intelligent, efficient, and resilient healthcare services within increasingly complex and data-intensive medical environments.

V. CONCLUSION

The investigation into digital health technologies and their impact on patient monitoring and clinical decision-making demonstrates the transformative role of intelligent healthcare systems within modern medical environments. The findings confirm that traditional healthcare models based on periodic clinical assessments, fragmented medical records, and reactive treatment approaches are increasingly inadequate in addressing the growing complexity of contemporary healthcare challenges associated with chronic diseases, aging populations, rising healthcare demands, and emergency medical conditions. The integration of wearable healthcare devices, telemedicine infrastructures, Internet of Medical Things (IoMT) systems, cloud computing, artificial intelligence, predictive healthcare analytics, and explainable clinical decision-support mechanisms enables healthcare institutions to continuously monitor patient conditions, improve diagnostic accuracy, optimize treatment planning, and enhance healthcare operational efficiency. The study demonstrates that healthcare organizations possessing mature digital infrastructures consistently achieve superior patient monitoring capability, faster emergency responsiveness, stronger clinical adaptability, and improved healthcare sustainability through real-time data-driven healthcare ecosystems. Furthermore, the research establishes that predictive healthcare analytics, AI-assisted diagnostics, cloud-enabled interoperability, and continuous physiological monitoring are among the most influential drivers improving patient-centered care and intelligent medical decision-making. The implementation of explainable artificial intelligence frameworks additionally strengthens physician trust, transparency, and accountability by enabling healthcare professionals to understand the clinical factors influencing predictive outcomes and treatment recommendations. The comparative

analysis between digitally advanced healthcare institutions and conventional healthcare systems further confirms that fragmented healthcare infrastructures and limited analytical capabilities significantly reduce healthcare responsiveness, treatment coordination, and clinical efficiency. Consequently, the study highlights the necessity for healthcare organizations to develop scalable digital infrastructures, strengthen healthcare cybersecurity frameworks, improve interoperability standards, and cultivate evidence-based clinical environments capable of supporting intelligent healthcare transformation. Overall, this research contributes to the expanding field of digital healthcare innovation by presenting an integrated analytical framework that combines predictive healthcare analytics, intelligent patient monitoring systems, and explainable clinical decision-support technologies into a unified healthcare model capable of supporting sustainable, adaptive, and patient-centered healthcare ecosystems in technologically advanced medical environments.

REFERENCES

- [1] E. H. Shortliffe and J. J. Cimino, *Biomedical Informatics: Computer Applications in Health Care and Biomedicine*, 4th ed., Springer, 2014.
- [2] R. S. Dick, E. B. Steen, and D. E. Detmer, *The Computer-Based Patient Record: An Essential Technology for Health Care*, National Academies Press, 1997.
- [3] D. Blumenthal, "Launching HITECH," *New England Journal of Medicine*, vol. 362, no. 5, pp. 382–385, 2010.
- [4] A. Darkins and M. Cary, *Telemedicine and Telehealth: Principles, Policies, Performance and Pitfalls*, Springer, 2000.
- [5] J. G. Webster, *Medical Instrumentation: Application and Design*, Wiley, 2009.
- [6] M. Chen, Y. Ma, J. Song, C. F. Lai, and B. Hu, "Smart clothing: Connecting human with clouds and big data for sustainable health monitoring," *Mobile Networks and Applications*, vol. 21, no. 5, pp. 825–845, 2016.
- [7] P. Groves, B. Kayyali, D. Knott, and S. Van Kuiken, *The Big Data Revolution in Healthcare*, McKinsey & Company, 2013.
- [8] S. M. Riazul Islam et al., "The Internet of Things for health care: A comprehensive survey," *IEEE Access*, vol. 3, pp. 678–708, 2015.
- [9] E. Topol, *Deep Medicine: How Artificial Intelligence Can Make Healthcare Human Again*, Basic Books, 2019.
- [10] G. Litjens et al., "A survey on deep learning in medical image analysis," *Medical Image Analysis*, vol. 42, pp. 60–88, 2017.
- [11] J. Kvedar, M. Coye, and W. Everett, "Connected health: A review of technologies and strategies to improve patient care with telemedicine and telehealth," *Health Affairs*, vol. 33, no. 2, pp. 194–199, 2014.
- [12] A. Pantelopoulos and N. Bourbakis, "A survey on wearable biosensor systems for health monitoring," *IEEE Transactions on Systems, Man, and Cybernetics*, vol. 40, no. 1, pp. 1–12, 2010.
- [13] T. Haleem, M. Javaid, R. P. Singh, and S. Suman, "Telemedicine for healthcare: Capabilities, features, barriers, and applications," *Sensors International*, vol. 2, 2021.
- [14] B. Chaudhry et al., "Systematic review: Impact of health information technology on quality, efficiency, and costs of medical care," *Annals of Internal Medicine*, vol. 144, no. 10, pp. 742–752, 2006.
- [15] J. Bates and A. Wright, "Evaluating eHealth: Undertaking robust international cross-cultural eHealth research," *PLoS Medicine*, vol. 6, no. 9, 2009.
- [16] T. Davenport and R. Kalakota, "The potential for artificial intelligence in healthcare," *Future Healthcare Journal*, vol. 6, no. 2, pp. 94–98, 2019.
- [17] D. B. Agus, *The End of Illness*, Free Press, 2012.
- [18] K. Hung and Y. T. Zhang, "Implementation of a WAP-based telemedicine system for patient monitoring," *IEEE Transactions on Information Technology in Biomedicine*, vol. 7, no. 2, pp. 101–107, 2003.
- [19] A. Holzinger, "Interactive machine learning for health informatics: When do we need the human-in-the-loop?" *Brain Informatics*, vol. 3, no. 2, pp. 119–131, 2016.

[20] C. Molnar, *Interpretable Machine Learning*, Lulu Press, 2020.

[21] S. M. Lundberg and S. I. Lee, “A unified approach to interpreting model predictions,” in *Advances in Neural Information Processing Systems*, 2017, pp. 4765–4774.

[22] World Health Organization, *Global Strategy on Digital Health 2020–2025*, Geneva, Switzerland, 2021.

[23] R. Sharma and P. Gupta, “Artificial intelligence applications in healthcare management,” *International Journal of Healthcare Information Systems and Informatics*, vol. 15, no. 4, pp. 45–61, 2020.

[24] J. H. Westbrook et al., “Association of interruptions with an increased risk and severity of medication administration errors,” *Archives of Internal Medicine*, vol. 170, no. 8, pp. 683–690, 2010.

[25] A. Kumar, D. Nilsen, and M. Abernethy, “Cloud computing and healthcare data management,” *Healthcare Informatics Research*, vol. 26, no. 3, pp. 189–197, 2020.